

EG on HIV, TB and Associated Infections  
12th Meeting  
Online

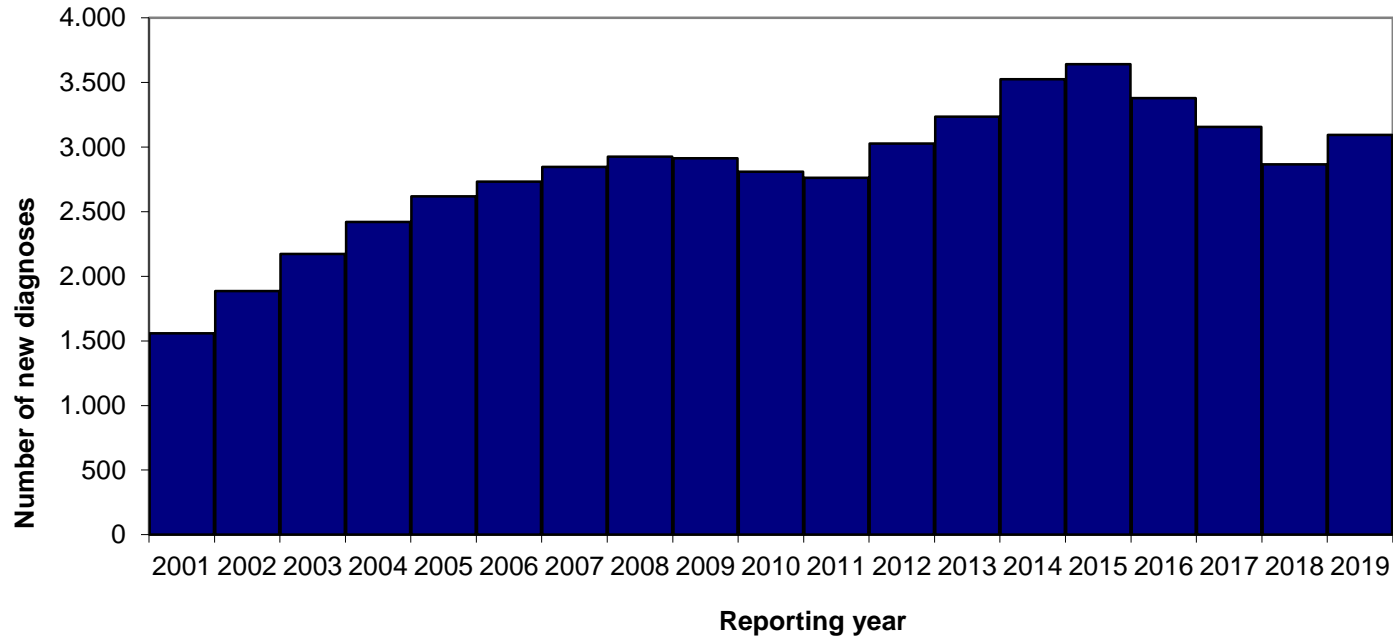
24 November 2020

Country update Germany 2019  
(HIV, TB, HCV, STI)

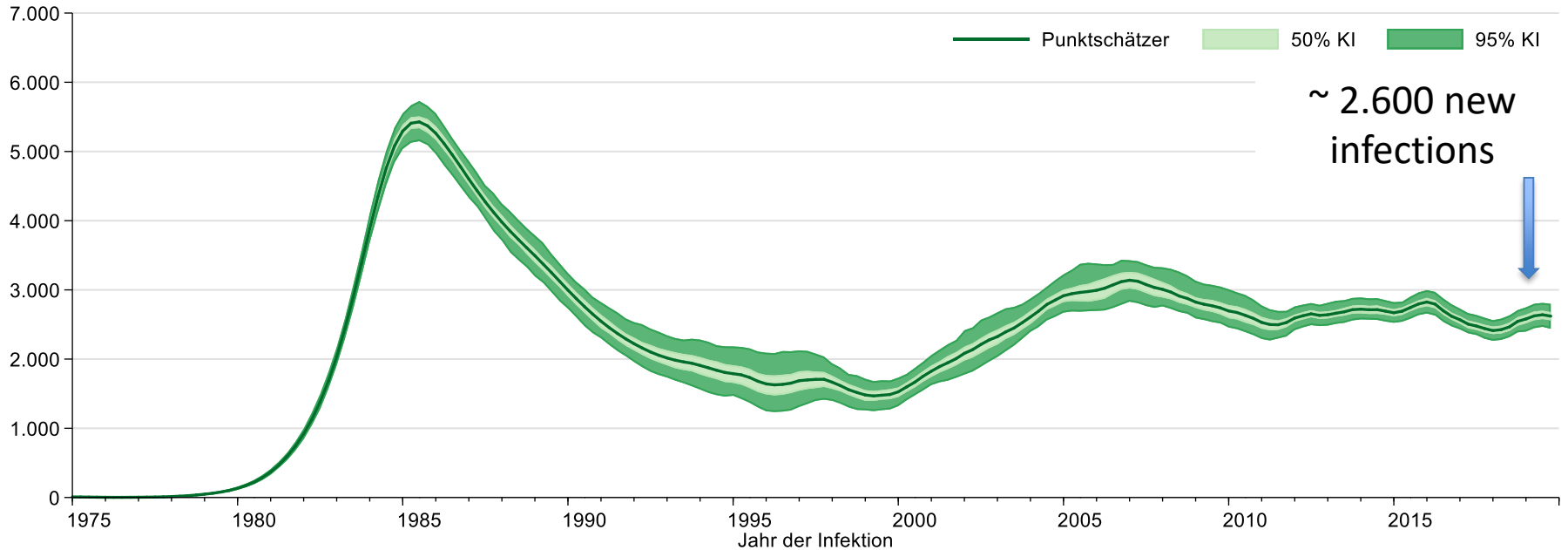
HIV, Syphilis, HBV and HCV

# **EPIDEMIOLOGICAL DATA FOR 2019**

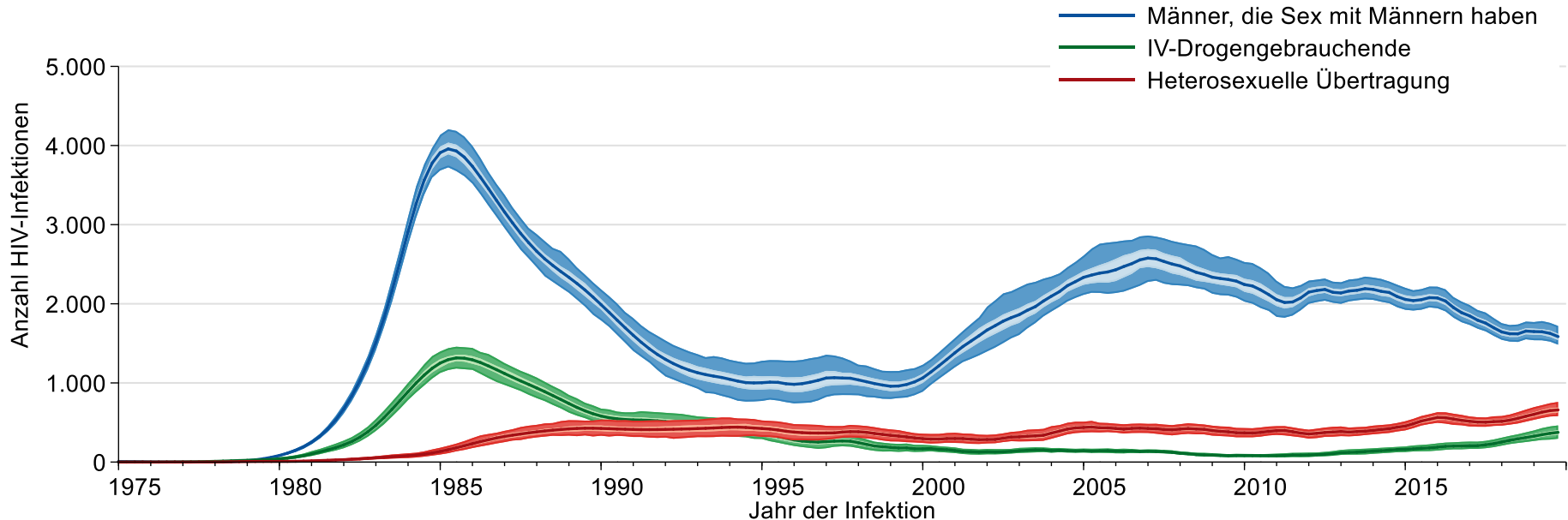
# Newly diagnosed HIV Germany 2001-2019



# Estimated number of new HIV infections in Germany by year of infection, 1980 – 2019



# New HIV infections\* by year of infection and transmission group (MSM, IDU and Hetero\*\*), 1980 - 2019



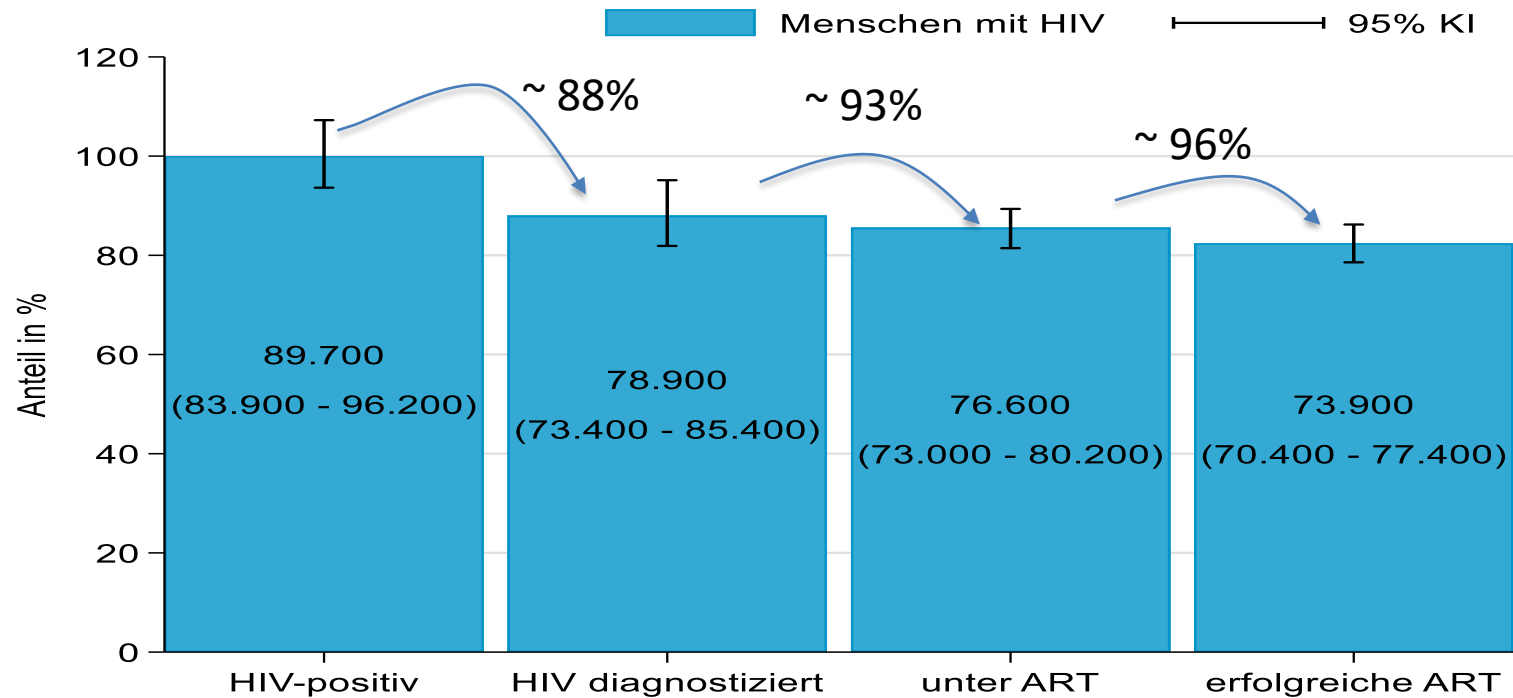
\* Infections in Germany or acquired abroad by persons with german origin

\*\* MSM: men having sex with men; IDU: intravenous drug users; Hetero: heterosexual transmission

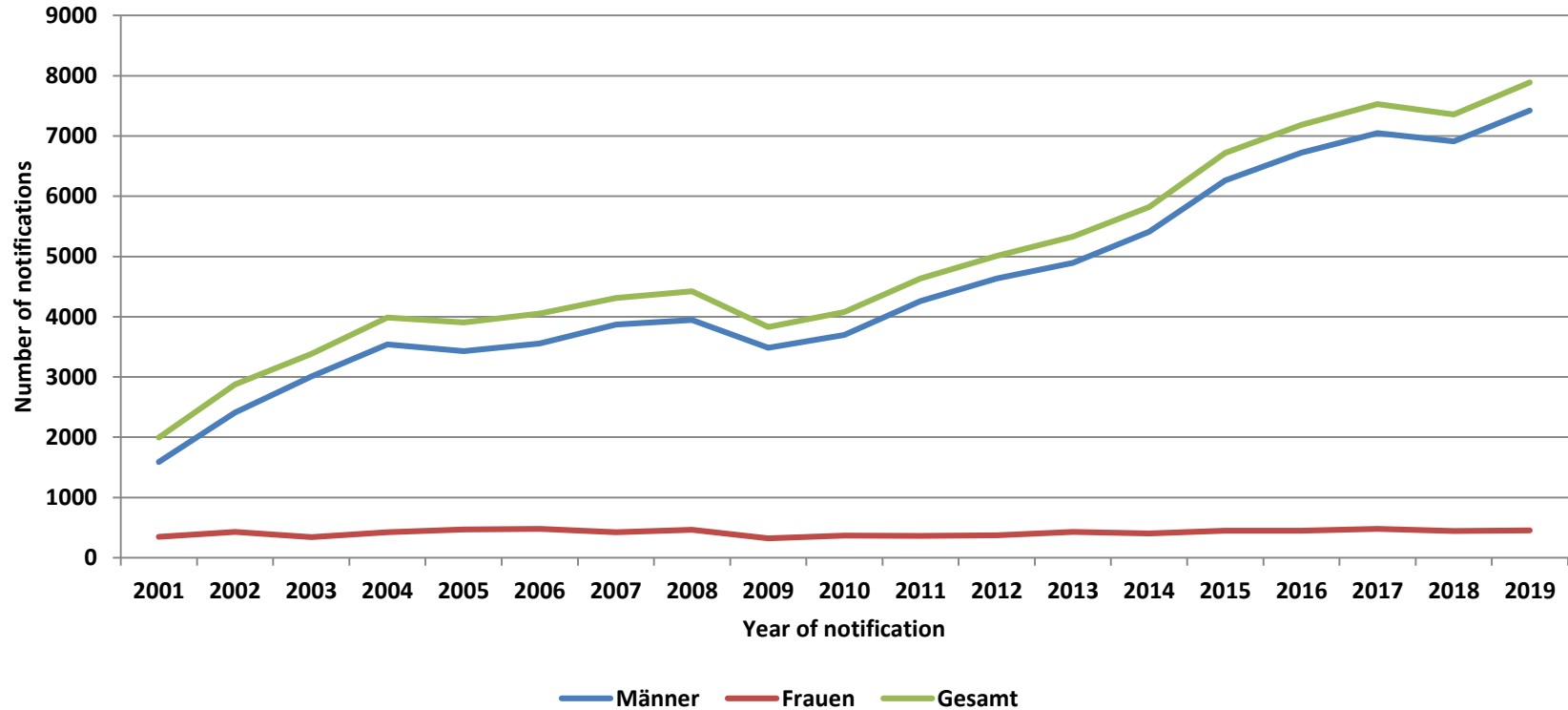
# HIV-treatment cascade 2019

UNAIDS goal 90-90-90

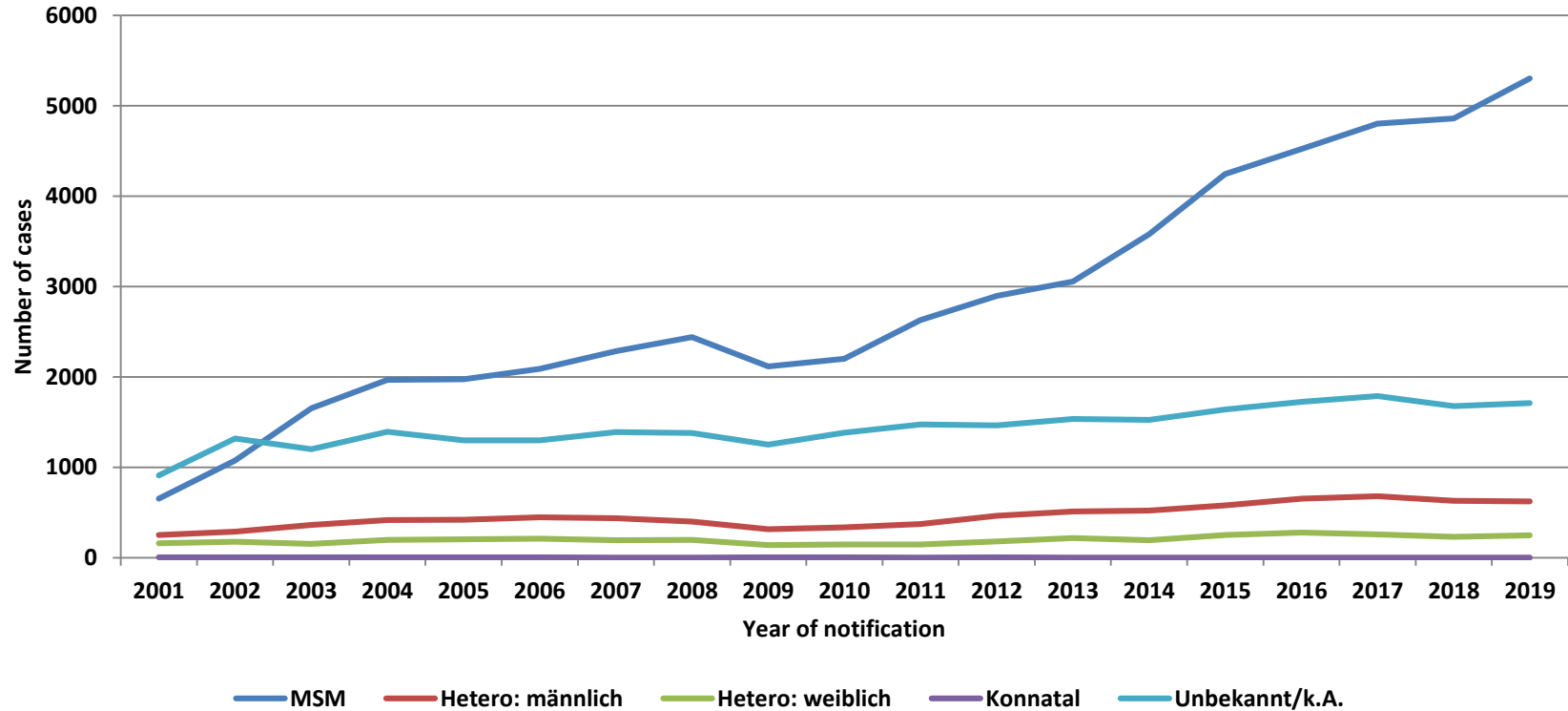
Germany 88-93-96\*



# Syphilis notifications, Germany 2001-2019

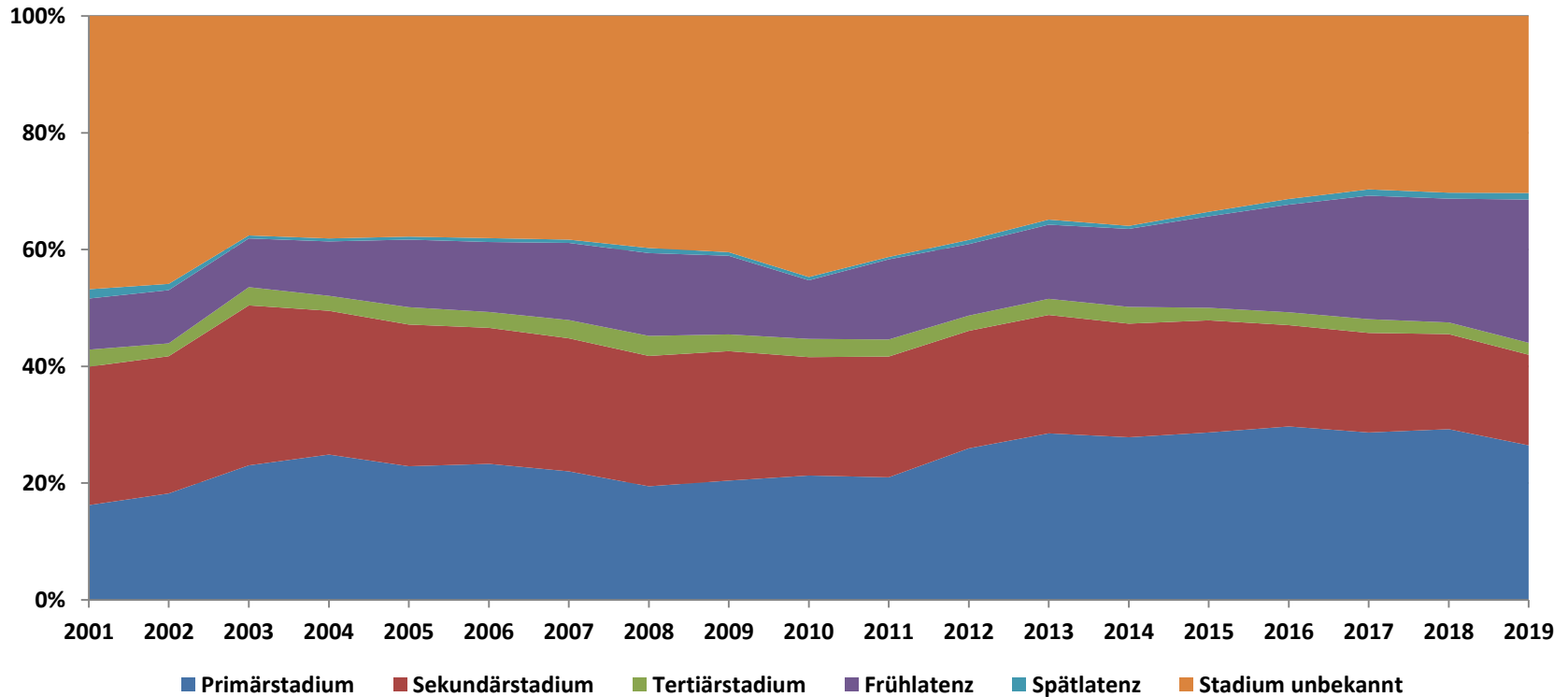


# Syphilis notifications by transmission group, Germany 2001-2019

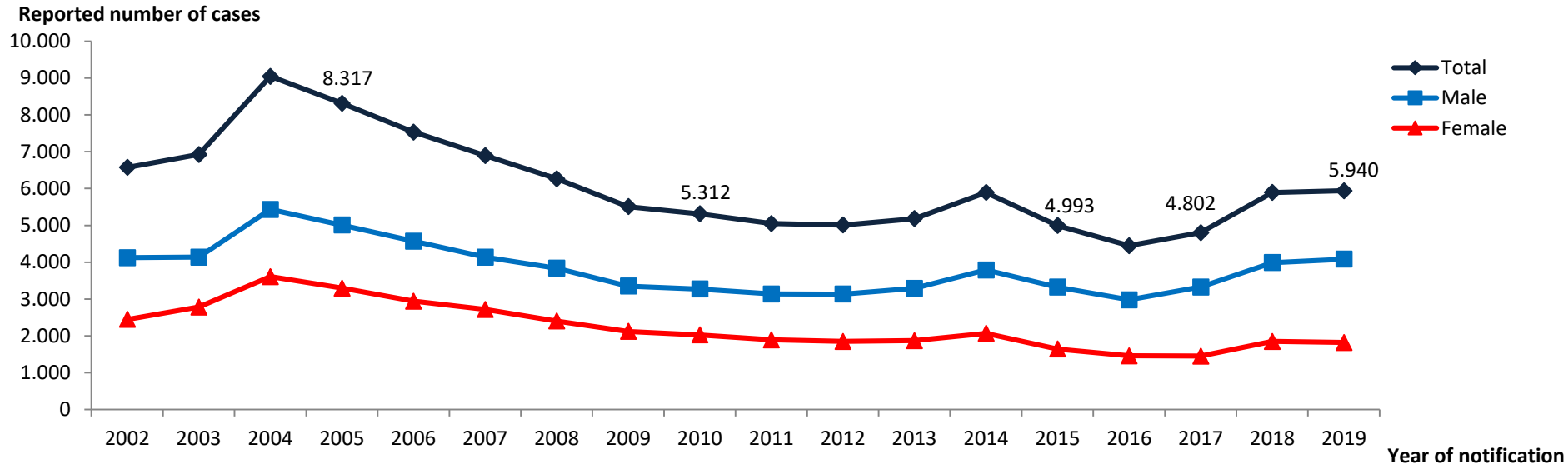




# Syphilis notifications by stage of syphilis at diagnosis

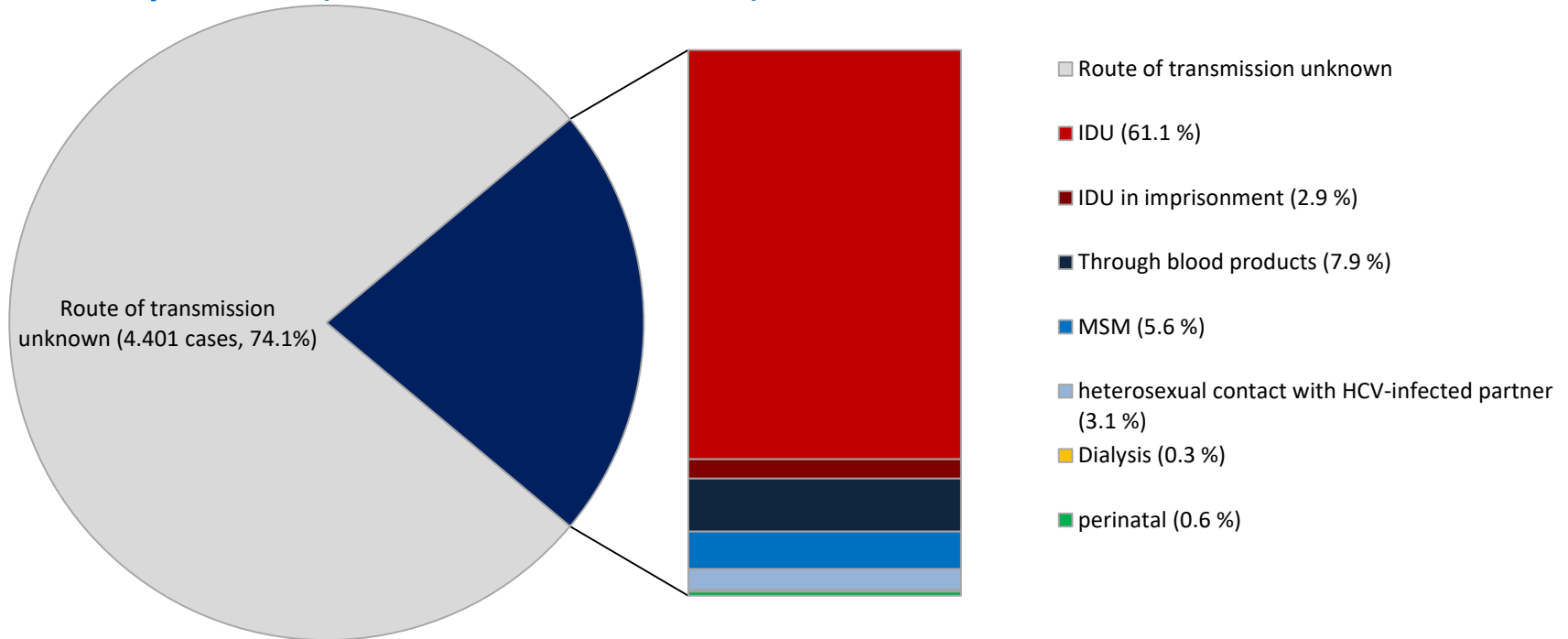


# Hepatitis C - reported cases by sex and year of notification, Germany, 2001 - 2019



# Newly diagnosed hepatitis C infections – most likely mode of transmission

Germany 2019 (n=1.539/N=5.940)

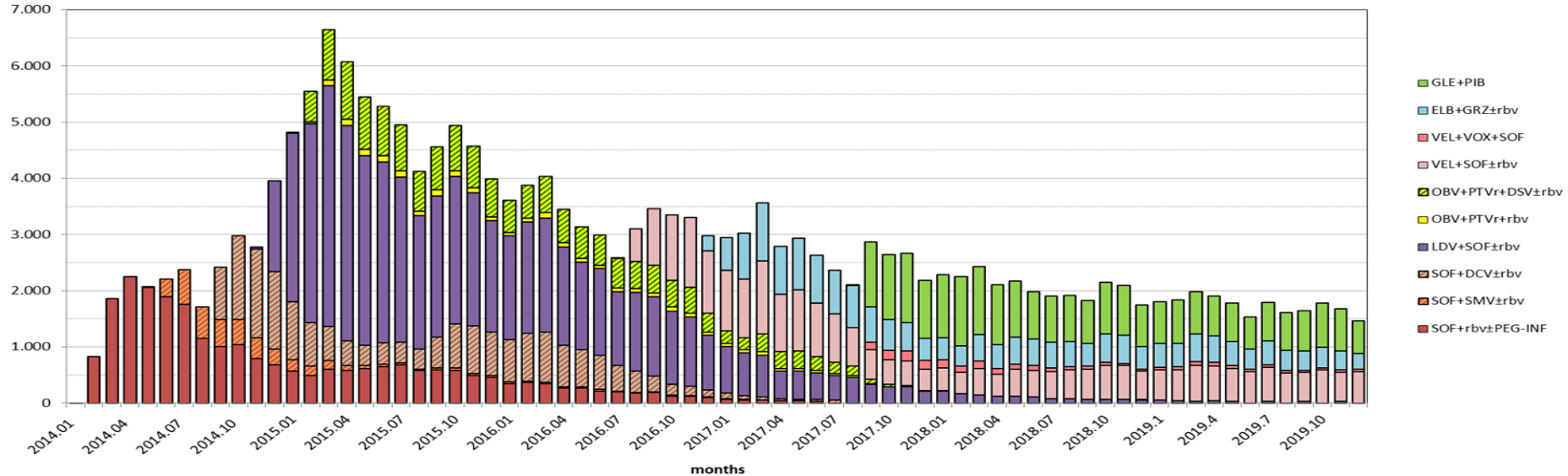


# Hepatitis C DAA treatment regimens/month

## Germany, 2014-2019

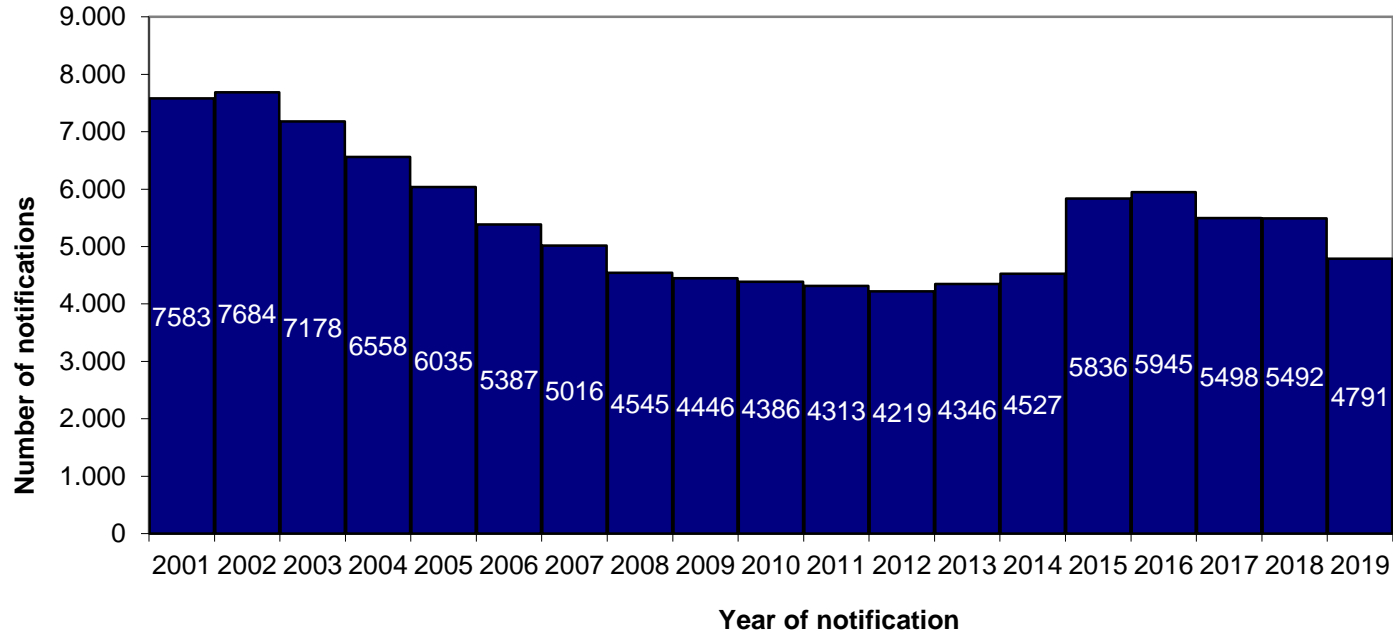
### Prescription data for patients with statutory health insurance

regimen (~individuals)



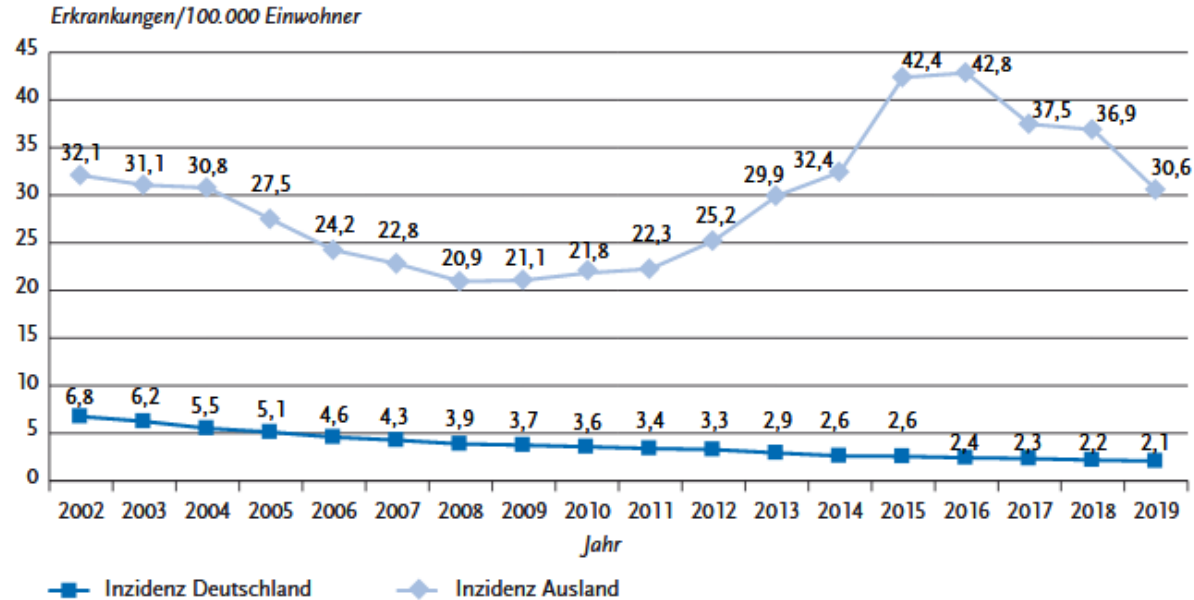
# **TB IN GERMANY 2019**

# TB in Germany , notifications 2001-2019



# TB in Germany by nationality, 2002-2019

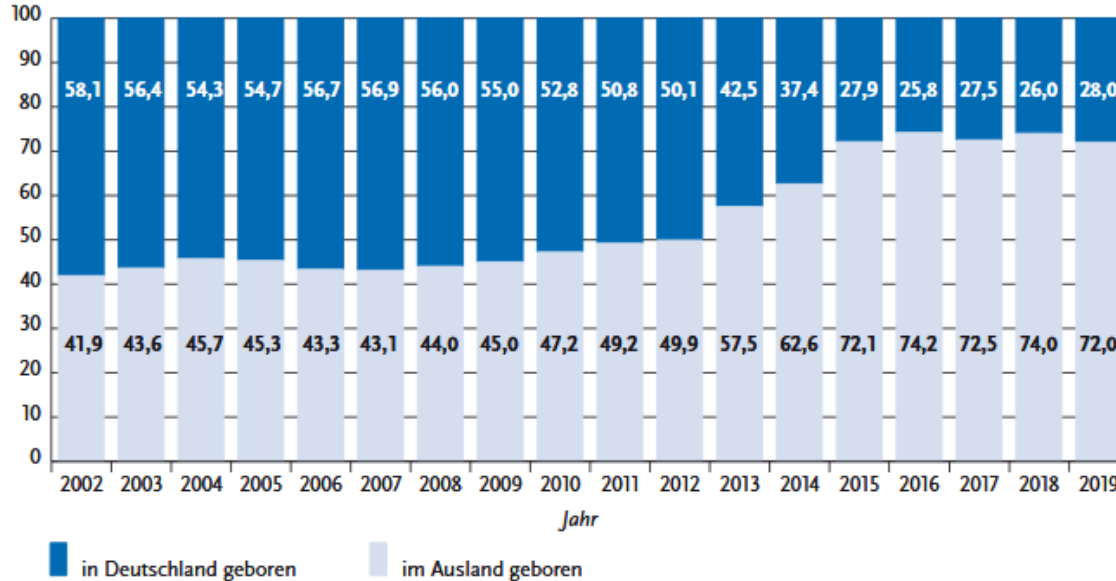
Zeitlicher Verlauf der Tuberkulose-Inzidenz von 2002–2019, getrennt nach deutscher und nicht deutscher Staatsangehörigkeit



# TB in Germany by country of birth, 2002-2019

Anteil im Ausland geborener Personen unter den übermittelten Tuberkulose-Erkrankten – Vergleich der Jahre 2002–2019

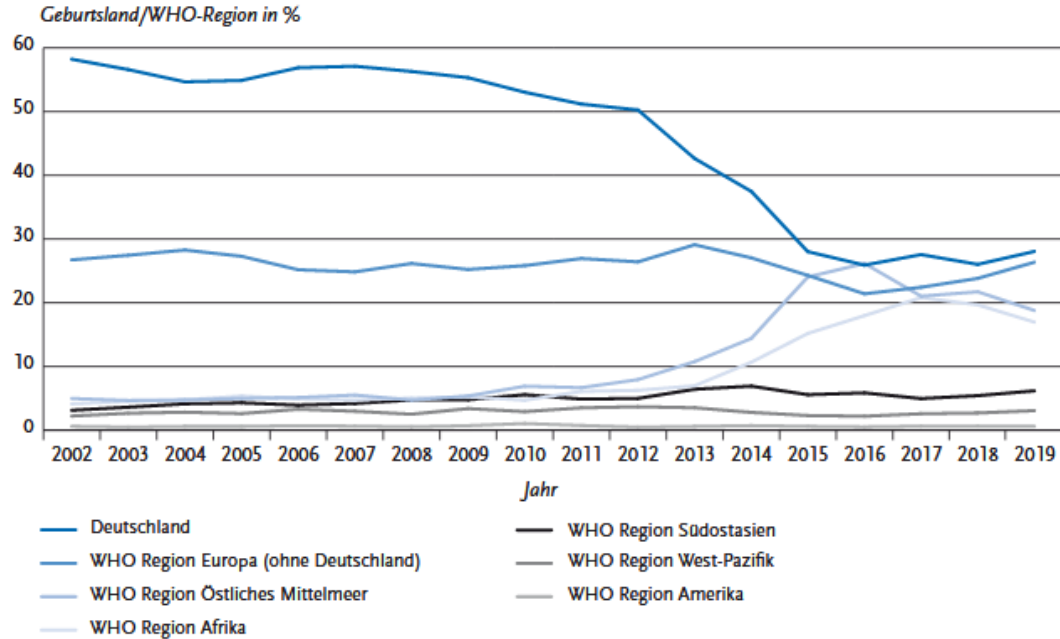
Anteil Geburtsland Deutschland bzw. Ausland in %





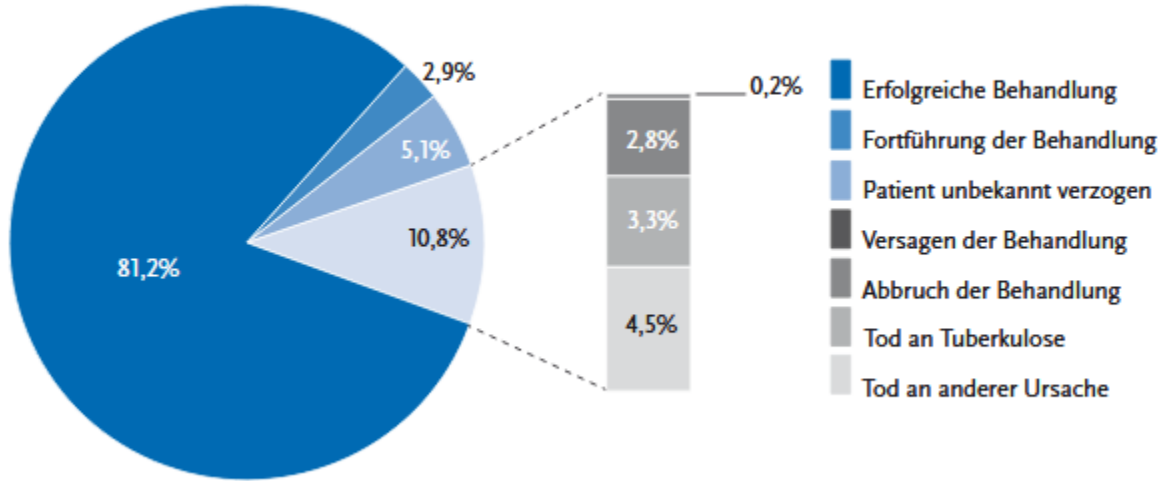
# TB in Germany by (WHO-)region of birth, 2002-2019

Prozentualer Anteil der Tuberkulose-Fälle nach WHO-Region\*, zeitlicher Verlauf 2002–2019



# TB in Germany 2018, treatment results

Tuberkulose-Fälle nach Behandlungsergebnis (N = 4.758)



# COVID-IMPACT

# Impact of SARS-CoV2 pandemic on reporting of blood-transmittable infections in 2020

Table (below). National surveillance of infectious diseases in Germany: change ( $\Delta\%$ ) in case numbers per notification category in week 10 to 32 in 2020, compared to the expected numbers based on the same weeks in 2016-2019.

	$\delta\%$	95%CI	
<b>Sexually transmitted and blood-borne infections</b>			
Syphilis	-12.1	-15.8	-8.2
HIV	-22.1	-27.6	-16.1
Hepatitis C	-27.7	-31.8	-23.4
Hepatitis B	-28.3	-32.0	-24.4