



Folkhälsomyndigheten
PUBLIC HEALTH AGENCY OF SWEDEN

Epidemiological Update 2019

SWEDEN



Reported cases in 2019

(mandatory case notifications from physicians and laboratories)

	<i>Number of cases (+/- compared with 2018)</i>	<i>Incidence per 100 000</i>
HIV	449 (-7%)	4
Tuberculosis	491 (- 3%)	5
Syphilis	431 (-9%)	4
Hepatitis B	1 103 (-3%)	11
Hepatitis C	1 397 (-13%)	14
Gonorrhoea	3 245 (+20%)	31
Chlamydia	34 726 (+8%)	336



Folkhälsomyndigheten
PUBLIC HEALTH AGENCY OF SWEDEN

HIV



HIV – incidence, accumulated numbers and prevalence

Incidence 2019:

- 449 cases = 4 /100 000 inhabitants
- A total of ca 13 500 reported HIV cases in Sweden 1983-2019

Prevalence 2019:

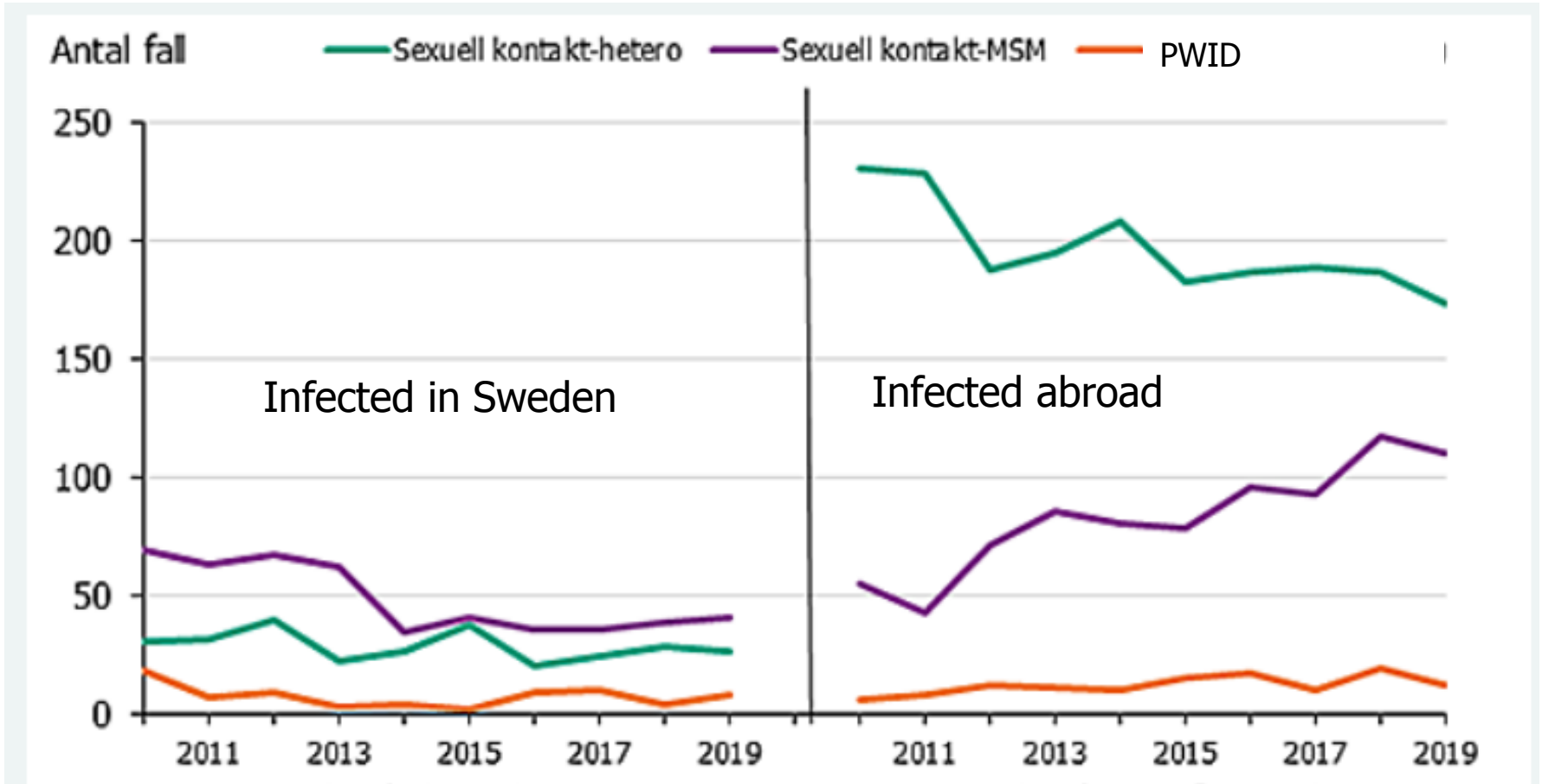
- Approx. 8 100 people currently are living with a known HIV infection in Sweden
- 78 PLWH per 100 000 inhabitants (<0,08% of pop).
(10.3 million inh. in Sweden Dec 2019)

HIV-cases reported in 2019

- 78% infected abroad (79%; 2018)
- 80% immigrants* (75%; 2018)
- 36% women (36%; 2018)

- 46% heterosexual transmission (44%; 2018)
- 34% sex between men (MSM) (33%; 2018)
- 5% people who inject drugs (PWID) (5%; 2018)

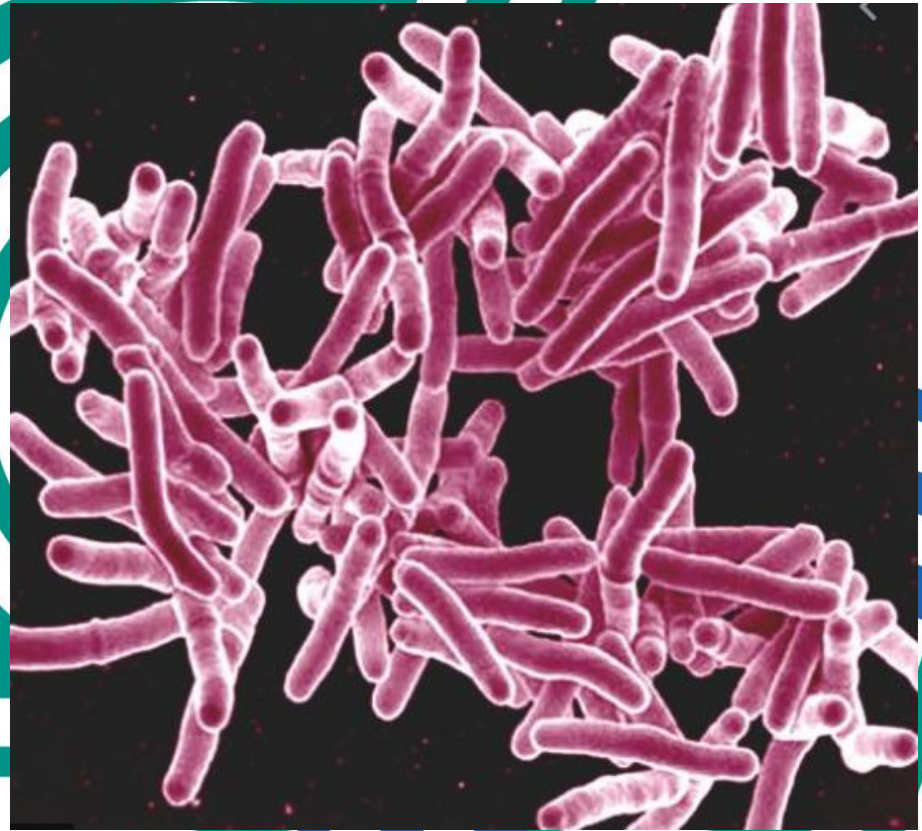
Reported HIV cases per route of transmission and country of infection, 2010-2019





Folkhälsomyndigheten
PUBLIC HEALTH AGENCY OF SWEDEN

TB



TB-cases reported in 2019

Reported TB-cases: 491 (- 3%) 5/100 000 inhabitants

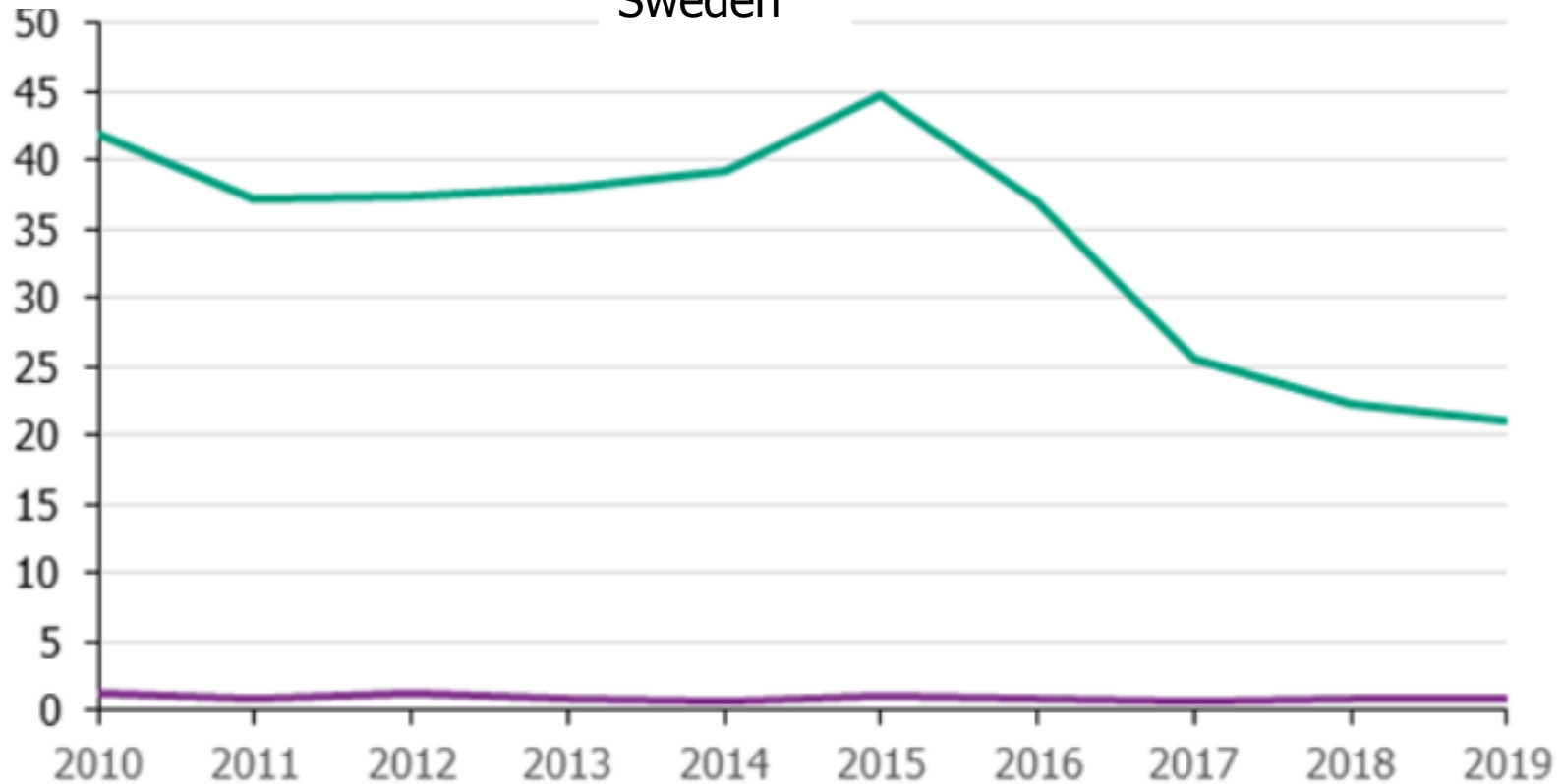
- 85% infected abroad (83%; 2018)
- 86% immigrants (86%; 2018)
- 46% women (43%; 2018)

- 1,8% (7 cases) MDR-TB (3% 2018)

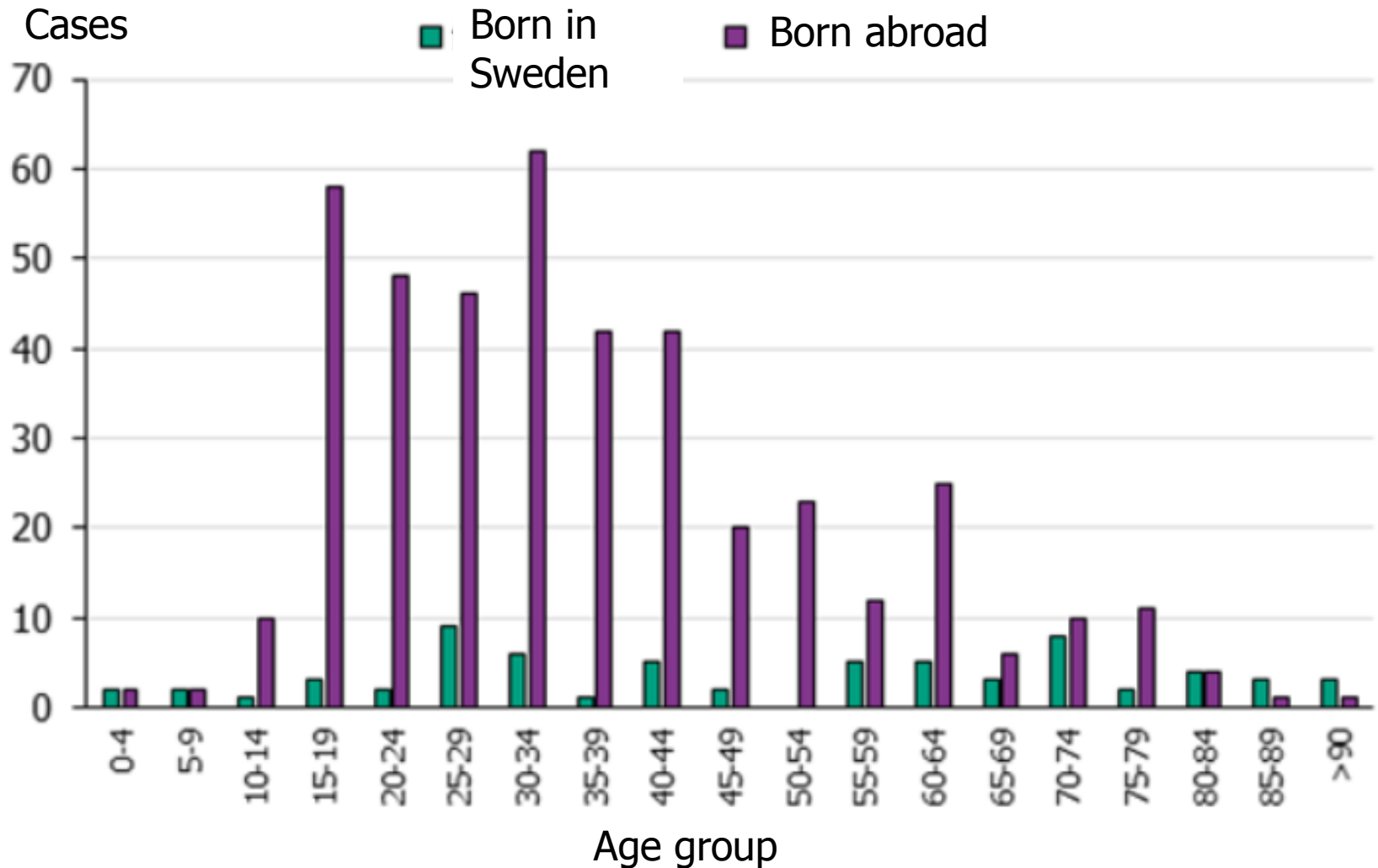
Incidence of TB per country of birth, 2010-2019

Cases per
100 000 inhab

— Born in Sweden — Born abroad



TB cases per age group and country of birth, 2019

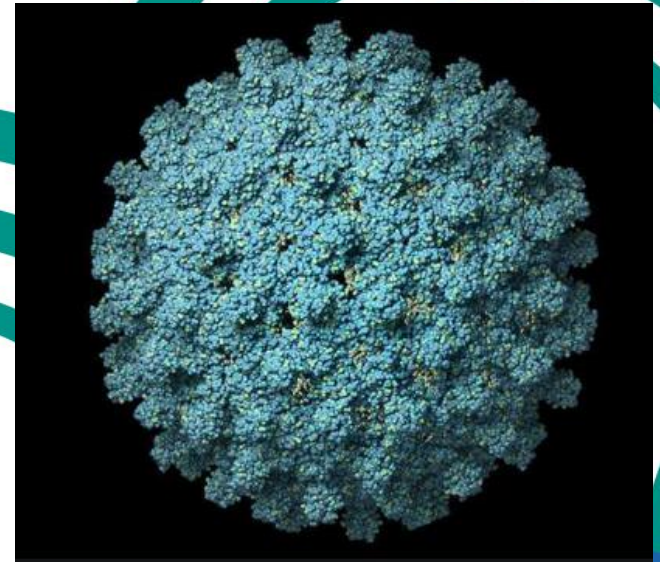
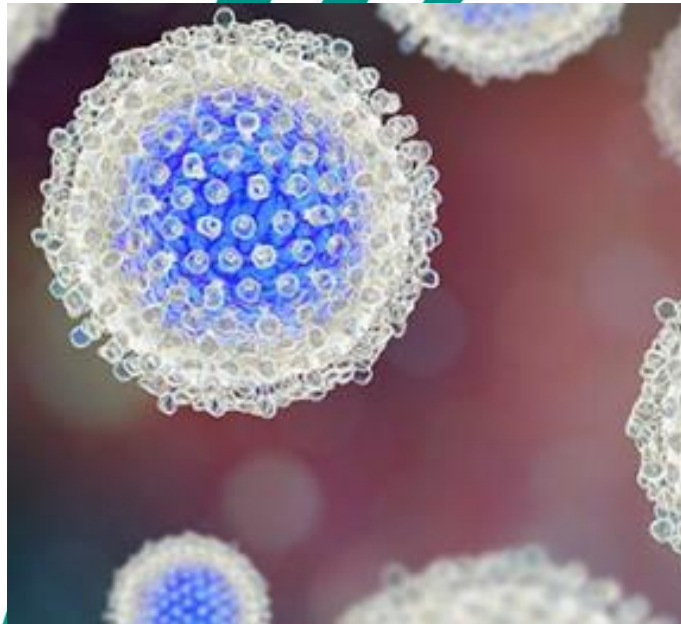




Folkhälsomyndigheten
PUBLIC HEALTH AGENCY OF SWEDEN

Hepatitis B

Hepatitis C

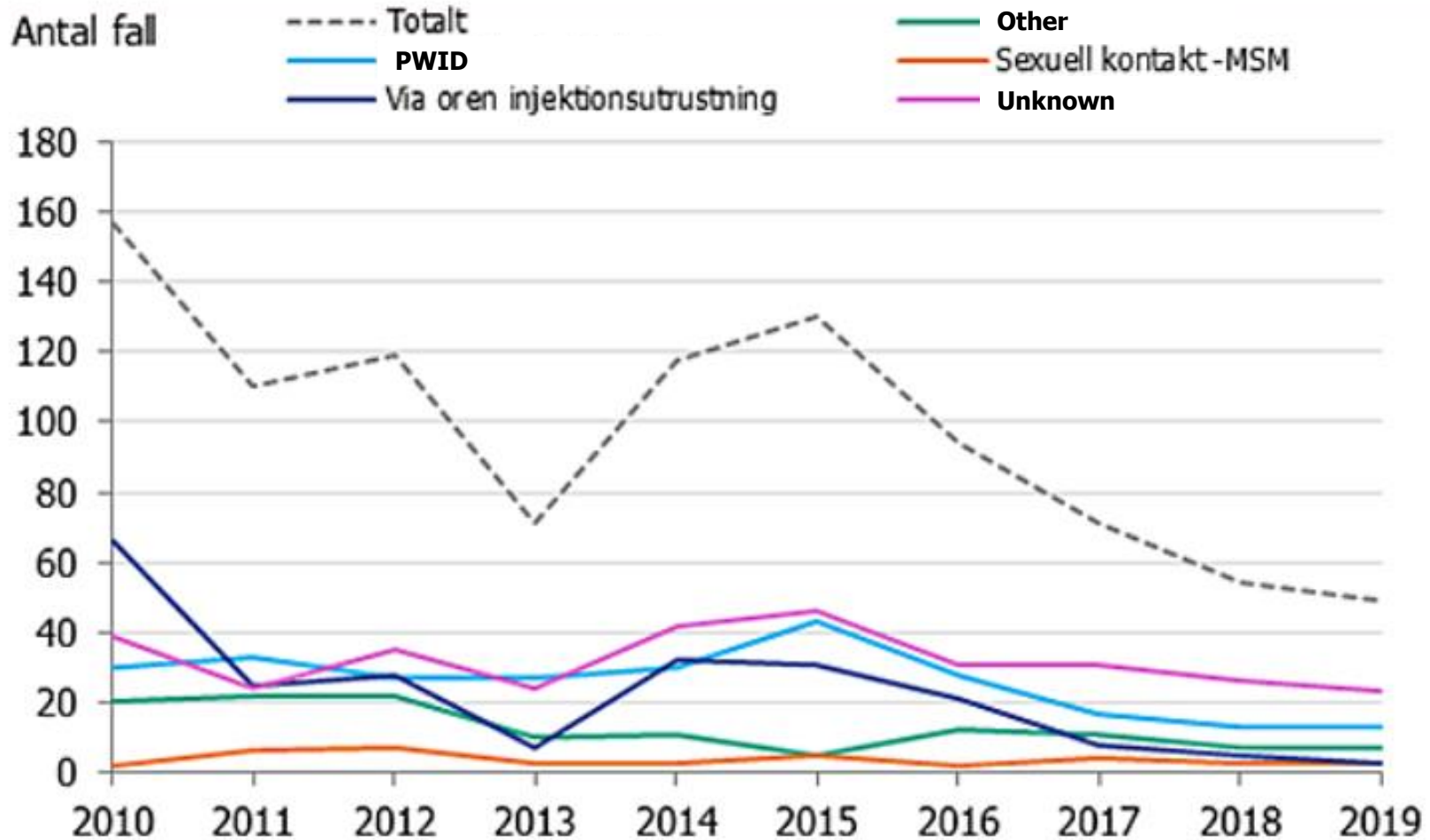


Hepatitis B & C cases reported in 2019

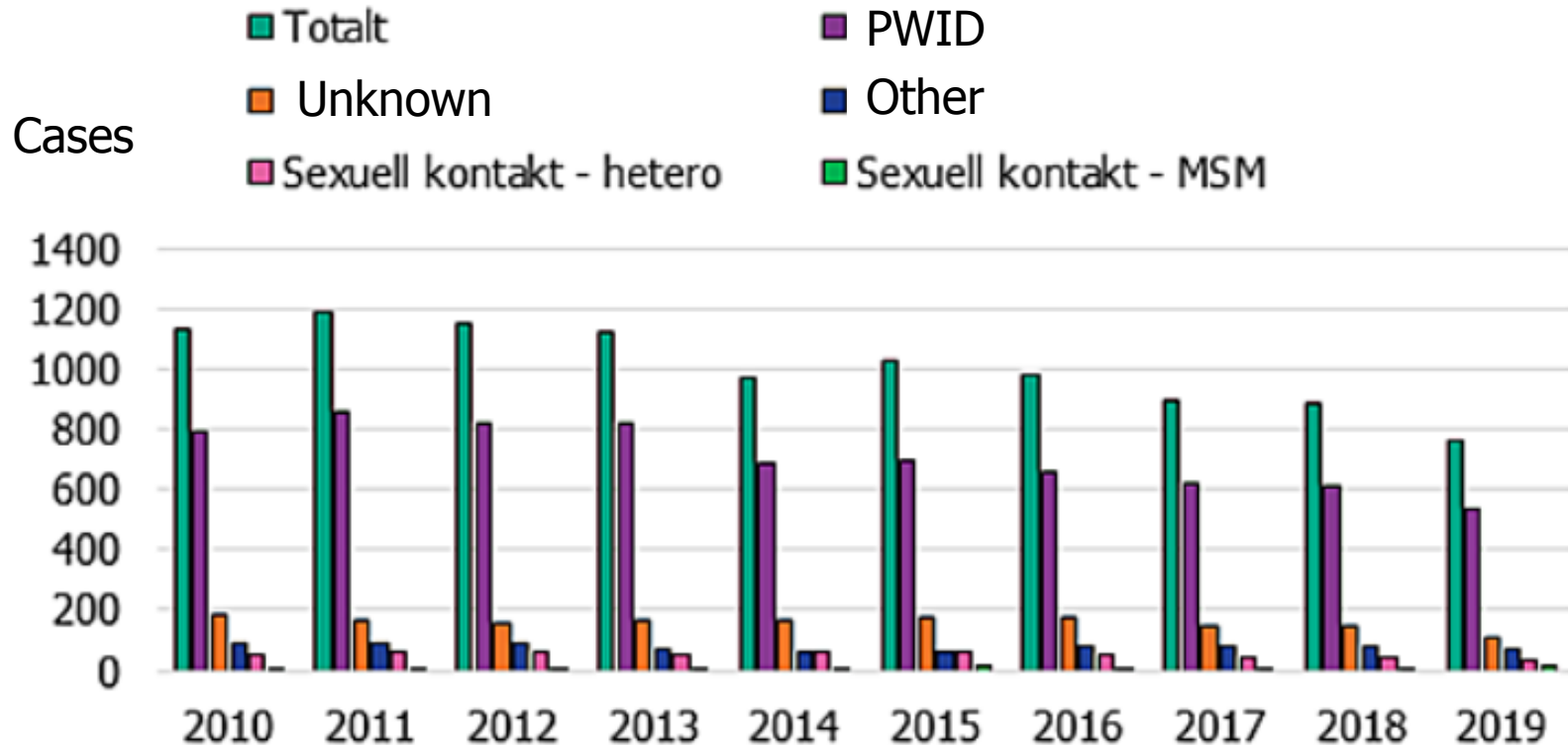
Hepatitis B cases **1 103** (-3%) **11/100 000 inh.**
Hepatitis C cases **1 397** (-13%) **14/100 000 inh.**

–	HBV	HCV
• Acute infection	3%	11%
• Infected abroad	84%	19%
• Women	40%	33%

Reported endemic HBV cases, 2010-2019



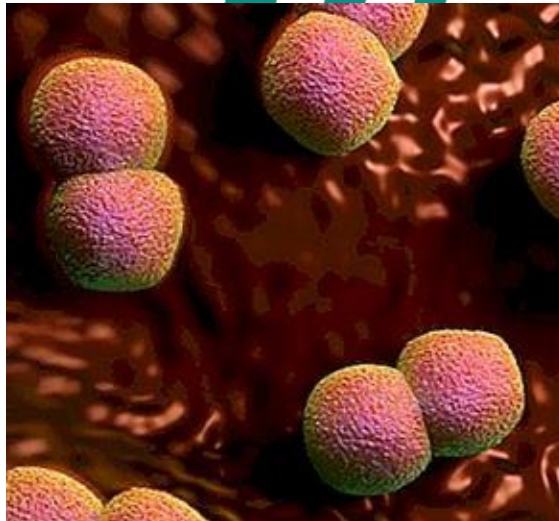
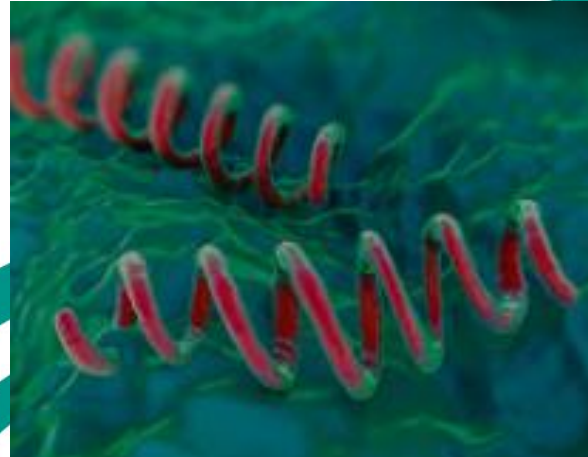
HCV route of transmission, 2010-2019





Folkhälsomyndigheten
PUBLIC HEALTH AGENCY OF SWEDEN

Syphilis Chlamydia Gonorrhoea



Reported STI in 2019

Syphilis	431 (-9%)	4/100 000 inhabitants
Gonorrhoea	3 245 (+20%)	31/100 000 inhabitants
Chlamydia	34 726 (+8%)	336/100 000 inhabitants

–	Syphilis	Gonorrhoea	Chlamydia
• Infected abroad	33%	24%	9%
• Women	7%	27%	56%
• MSM	78%	44%	7%