



© Rebecca Ravneberg/ Helsedirektoratet



# Primary Healthcare Team in GP's practice

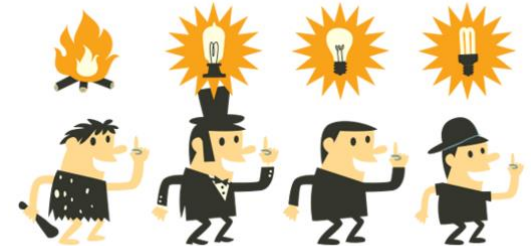
Svein Lie, Medical Director

# The Future Primary Health Service

Coherent services

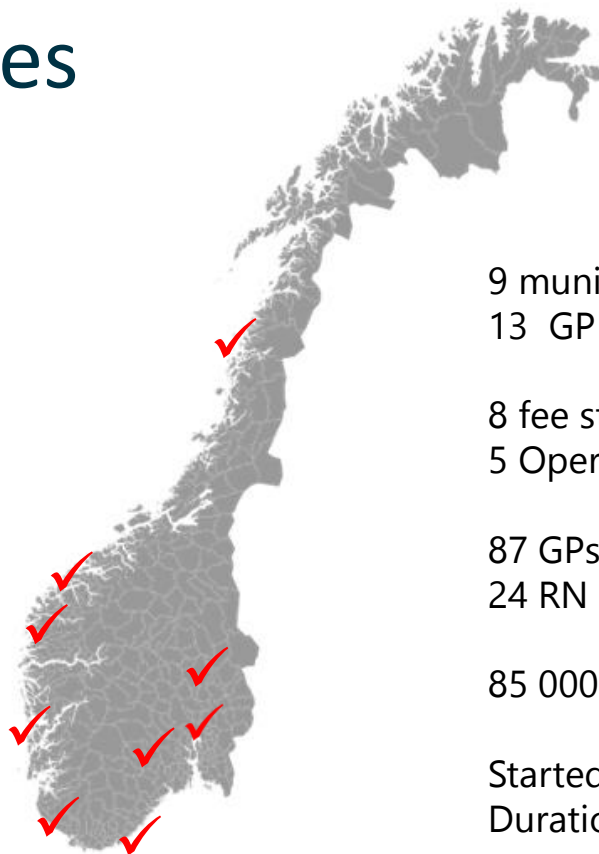
The Patient's Health Service

Innovation and service development



# 9 Pilot Municipalities

- RANA
- EID
- FLORA
- AUSTEVOLL
- HÅ
- KRISTIANSAND
- SELJORD
- RINGSAKER
- OSLO (Alna, Sagene, Nordstrand)



9 municipalities  
13 GP practices

8 fee structure  
5 Operating grants model

87 GPs  
24 RN (new)

85 000 residents

Started: April 2018  
Duration 3 år

# The main elements in the project:

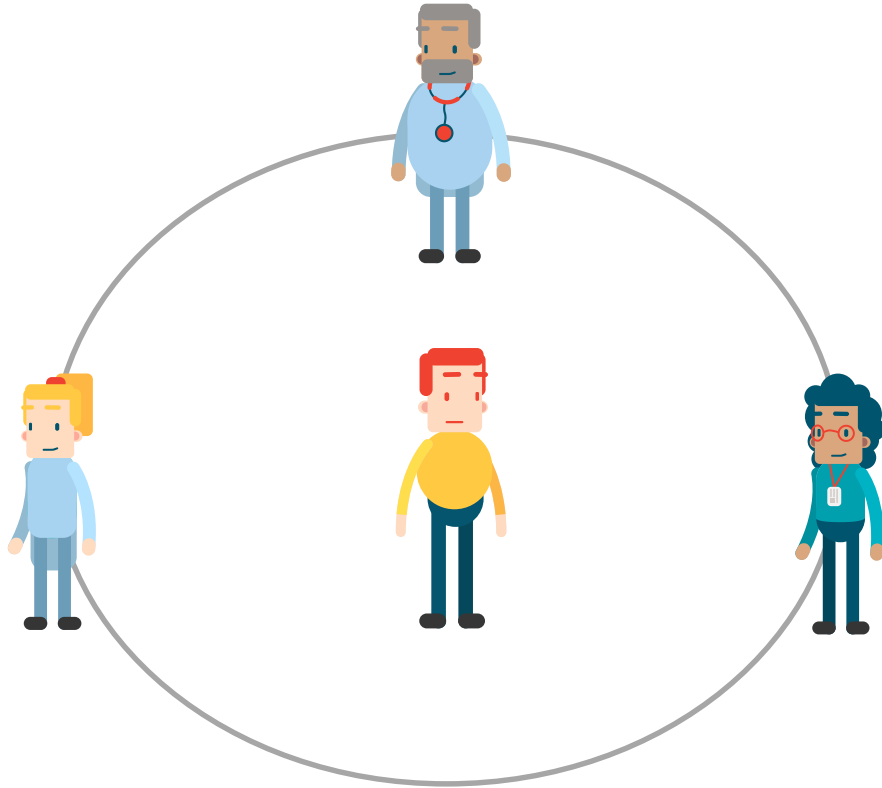
## 1. Team organization in GP's practice (new)

GP, RN and medical secretary

## 2. Two different financing models:

- The Operating grants model (brand new)
- The Fee model (equal to today's funding, but includes RN fares)

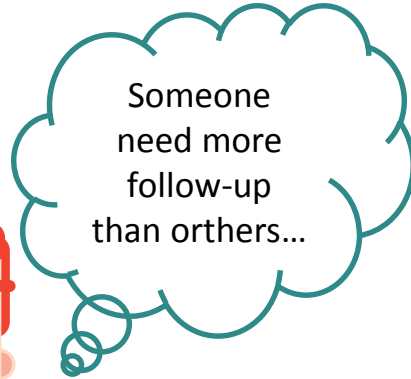
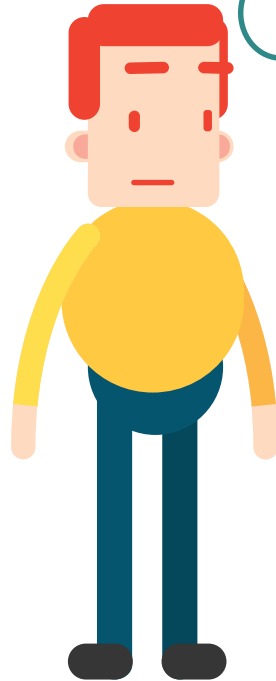
## GP practice



Better service for the  
patient

More to those who  
need it most

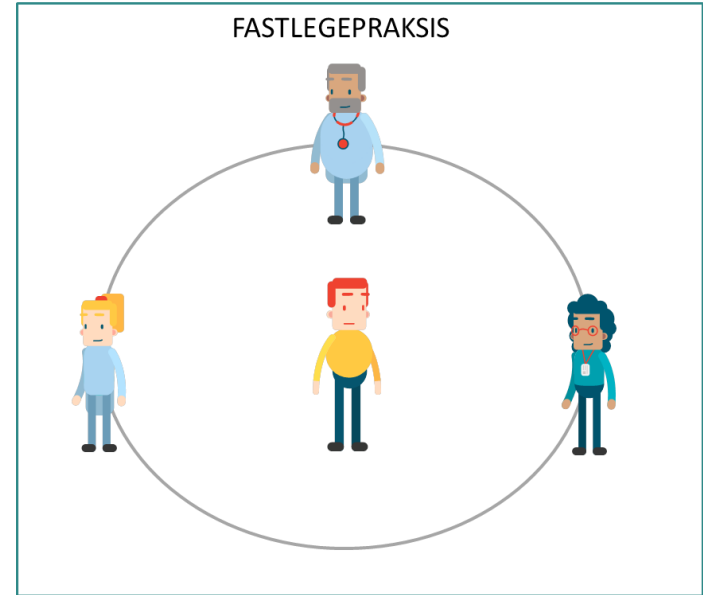
# Priority patient groups



- Mental health problems and substance abuse
- Chronic diseases
- Frail elderly
- Retarded
- Disability
- Weak demanders

# The projects outcomes

- Better health and mastery
- Increased patient satisfaction
- Better coordinated and interacting services
- Reduced need
- Better interaction between specialist and primary health service
- Better overall use of resources



# The Operating grants model (brand new) – financing based on

- Weighted per capita
- Quality
- Patient payment



# The Fee model – financing based on

- Grant funding (per capita etc.)
- Fares
- Patient payment

# Digitization

- Electronic patient record
- Patient pathways
- Treatment plan



# Evaluation

- Evaluation before, during and at the end of the project
- Method:
  - Interview
  - Survey
  - Registry data

