

News regarding infectious diseases

Short Presentation

Germany

New Brochure

Do not be afraid of
AIDS

Information for
Officers in Prison

Ed. German AIDS
Aid

2018 20 pages

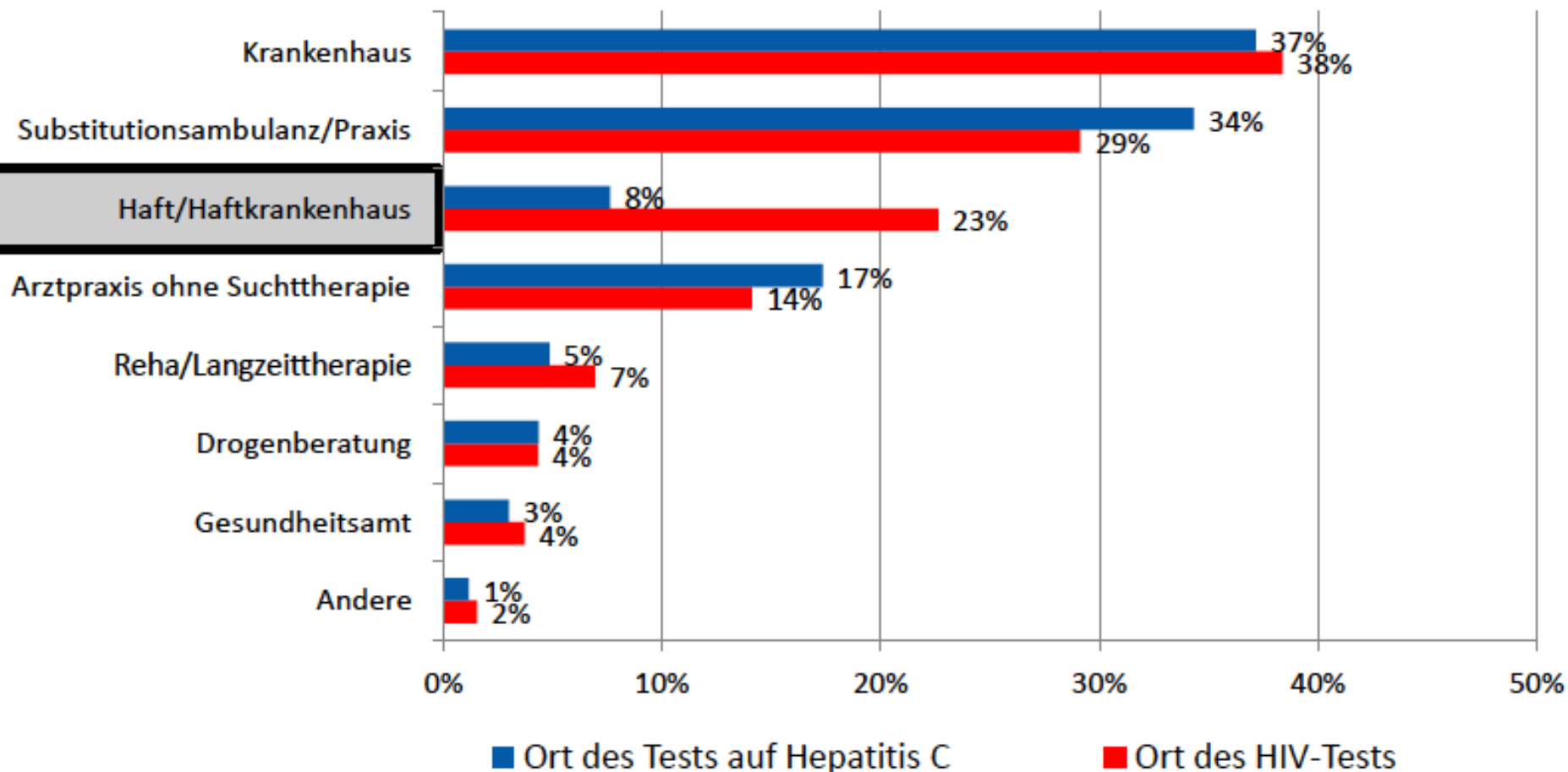
**KEINE ANGST VOR
HIV UND HEPATITIS!**

Informationen für Beschäftigte in Justizvollzugsanstalten



Häufigste Orte der HCV- und der HIV-Testung

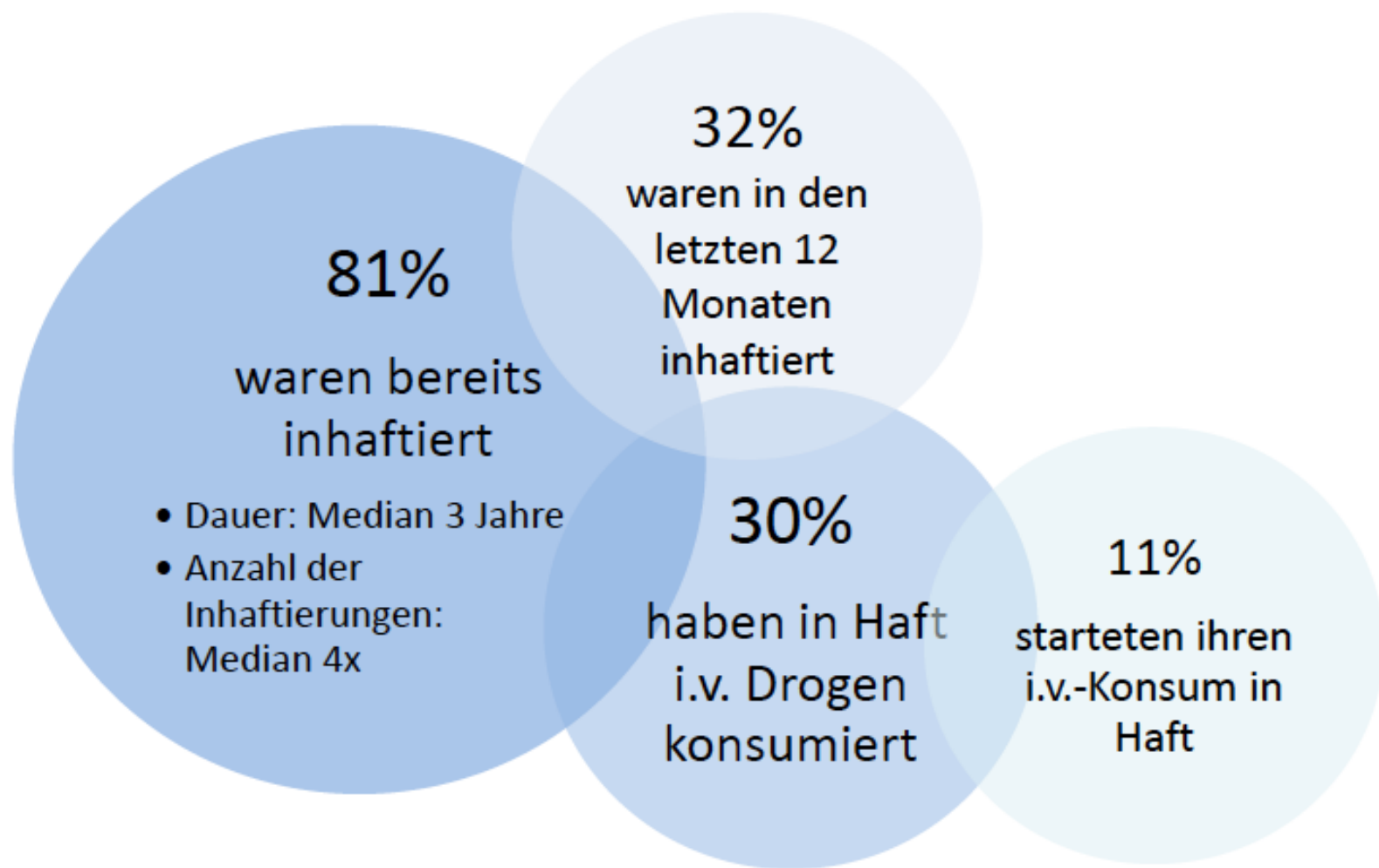
DRUCK-Studie, Gesamtstudienpopulation





Hafterfahrung und Konsum in Haft

Gesamtstudienpopulation



Long acting buprenorphin

Journal of Substance Abuse Treatment 78 (2017) 22–29



Contents lists available at ScienceDirect

Journal of Substance Abuse Treatment



Pharmacokinetics and pharmacodynamics of a buprenorphine subcutaneous depot formulation (CAM2038) for once-weekly dosing in patients with opioid use disorder



Christian Haasen^a, Margareta Linden^b, Fredrik Tiberg^{b,*}

^a Clinical Trial Centre North, Mediate GmbH, University Medical Centre Hamburg Eppendorf, Martinistraße 52, Haus 510, 20246 Hamburg, Germany

^b Camurus AB, Ideon Science Park, Gamma Building, Sölvegatan 41, 223 70 Lund, Sweden

<http://www.emcdda.europa.eu/system/files/publications/6585/TD0417834ENN.pdf>



European Monitoring Centre
for Drugs and Drug Addiction



Drugs and the darknet

Perspectives for enforcement,
research and policy

2017

Part 2



Activities in German speaking Area

Main Topic:
How to deal with
Drug Addicts and
User in Prison





DRUG USE IN PRISONERS

**Epidemiology, Implications,
and Policy Responses**

edited by **STUART A. KINNER &
JOSIAH D. "JODY" RICH**

OXFORD

Scientific approach ed. 2018

Announced EMCDDR Conference 2017
Lisbon



Bundesinstitut
für Arzneimittel
und Medizinprodukte

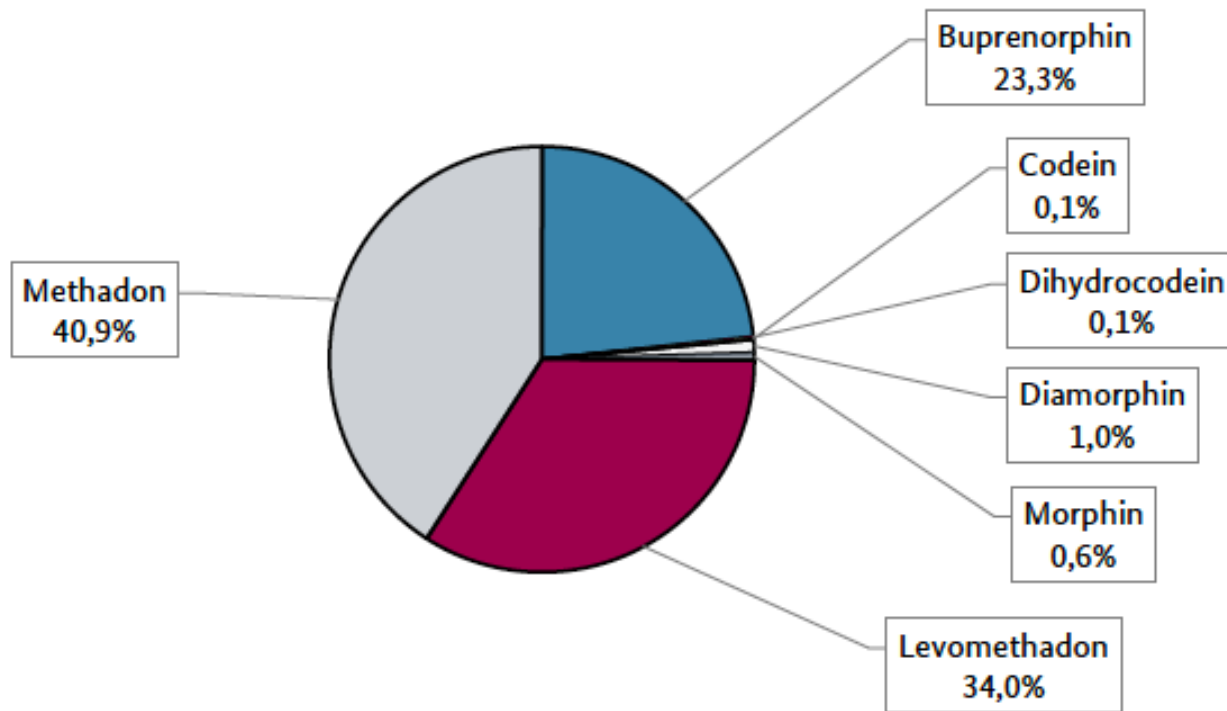
BERICHT ZUM SUBSTITUTIONSREGISTER

Januar 2018

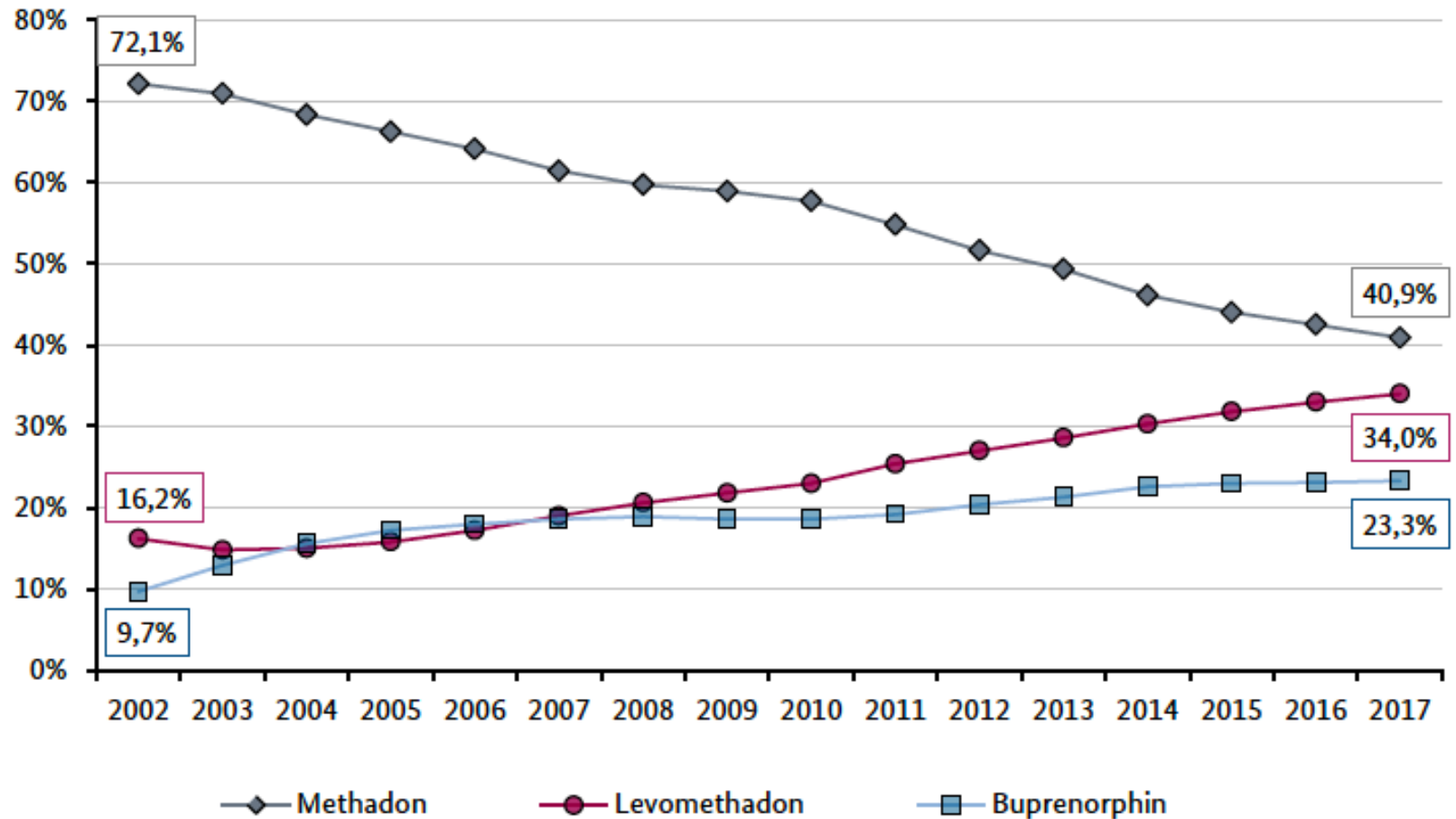
https://www.bfarm.de/SharedDocs/Downloads/DE/Bundesopiumstelle/SubstitReg/Subst_Bericht2018.pdf;jsessionid=0EA72D1389F874E06DC8D4246A1757A1.2_cid329?__blob=publicationFile&v=3

Opioid Substitut use by Type Germany

Abbildung 4:
Art und Anteil der gemeldeten Substitutionsmittel (Stichtag 1.07.2017)



Entwicklung Substitueinsatz



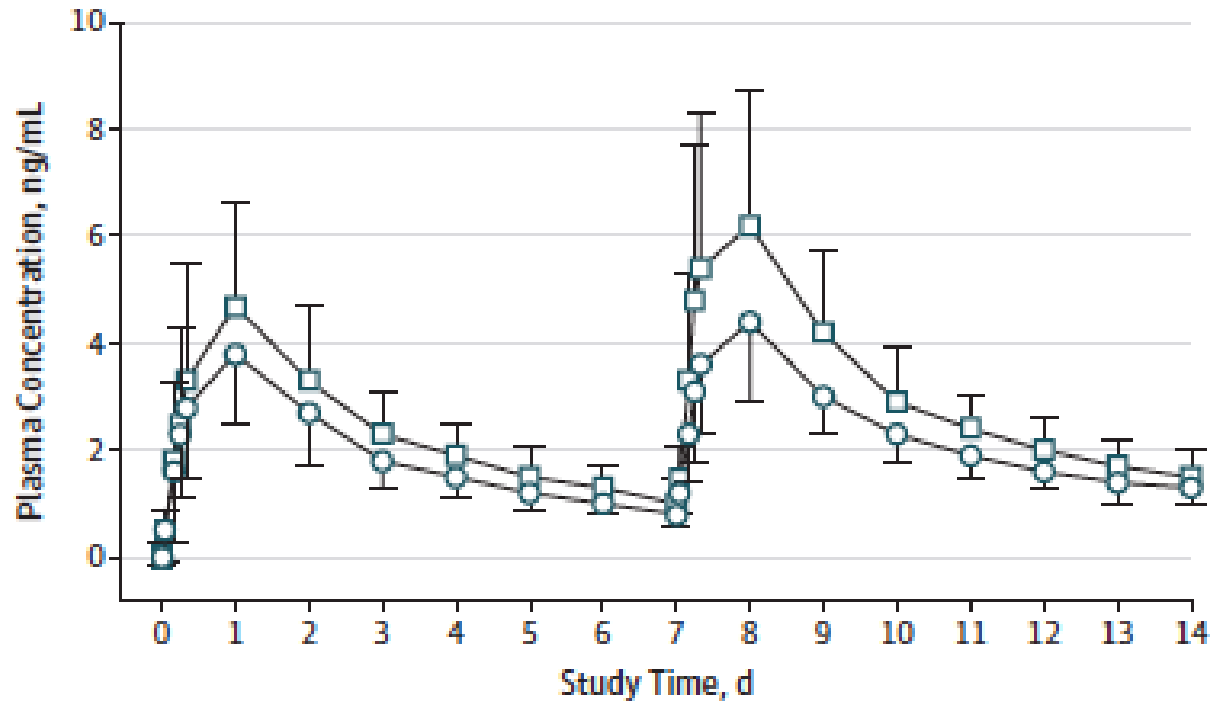
Langwirksame Substitute

JAMA Psychiatry | [Original Investigation](#)

Effect of Buprenorphine Weekly Depot (CAM2038) and Hydromorphone Blockade in Individuals With Opioid Use Disorder A Randomized Clinical Trial

Sharon L. Walsh, PhD; Sandra D. Comer, PhD; Michelle R. Lofwall, MD; Bradley VInce, DO; Naama Levy-Cooperman, PhD; Debra Kelsh, MD; Marion A. Coe, BA; Jermaine D. Jones, PhD; Paul A. Nuzzo, MA; Fredrik Tiberg, PhD; Behshad Sheldon, BS; Sonnie Kim, PharmD

B Buprenorphine

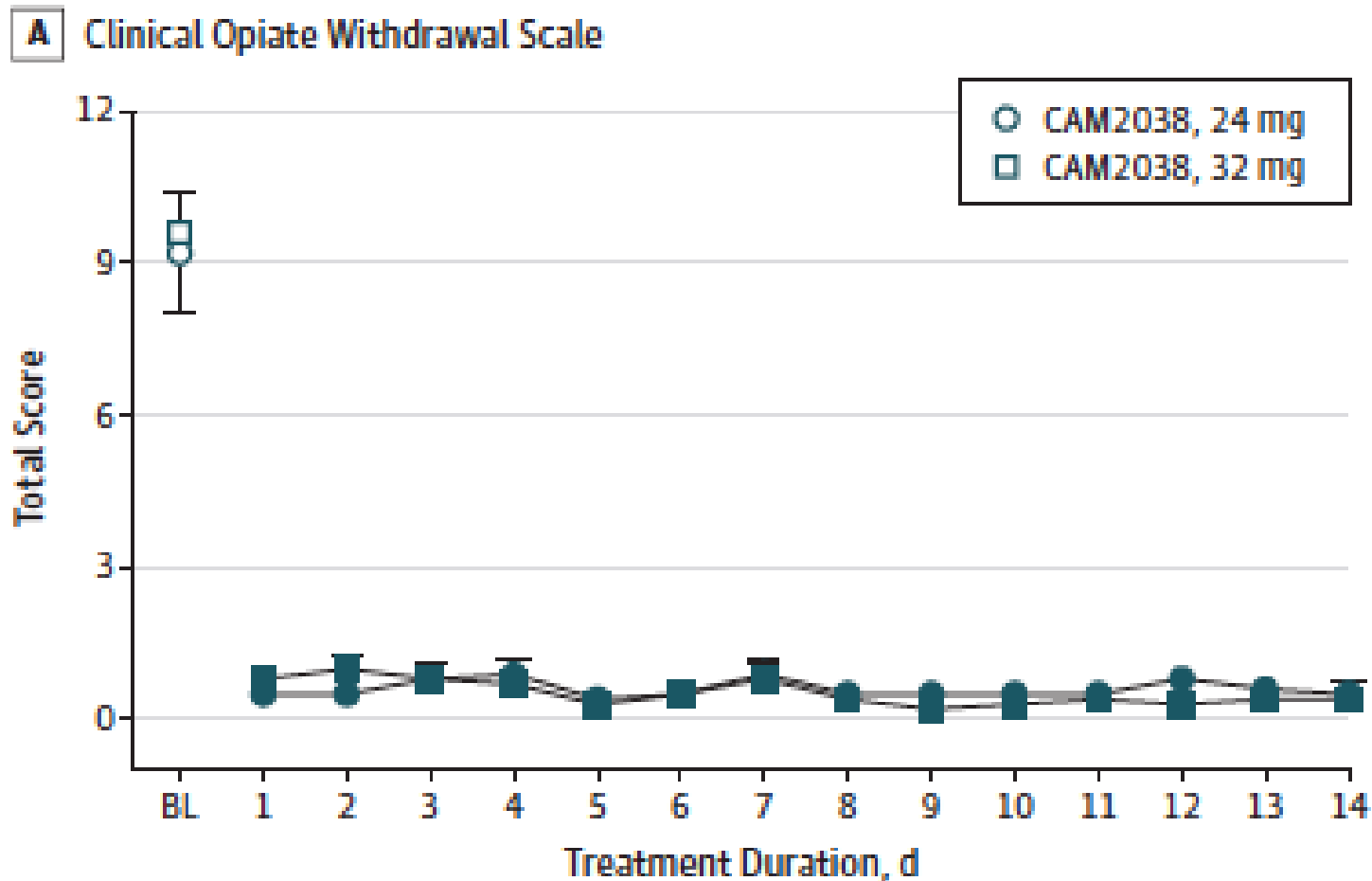


A, Mean (± 1 SEM) Peak Ratings for the Clinical Opiate Withdrawal Scale for CAM2038, 24 mg and 32 mg are shown at baseline (ie, before CAM2038 injection) and each study day thereafter. CAM2038 injections were administered on day 0 and day 7. The repeated-measures model revealed a significant main effect of day (all $P < .001$) for the Clinical Opiate Withdrawal Scale ($F_{14,294} = 39$ for 24 mg and $F_{14,322} = 78.4$ for 32 mg). B, Graph shows the arithmetic mean (± 1 SD) buprenorphine plasma concentrations for the cohorts over the course of the study. CAM2038, 24 mg: $n = 22$; 32 mg: $n = 24$.

^a The filled symbols indicate a significant difference from the baseline score (Tukey t test; $P < .05$).

Verlauf der Symptomatik

Figure 4. Clinical Opiate Withdrawal Scale and Buprenorphine Concentrations



Wöchentlich gg Monatlich

Adv Ther (2017) 34:560–575
DOI 10.1007/s12325-016-0472-9

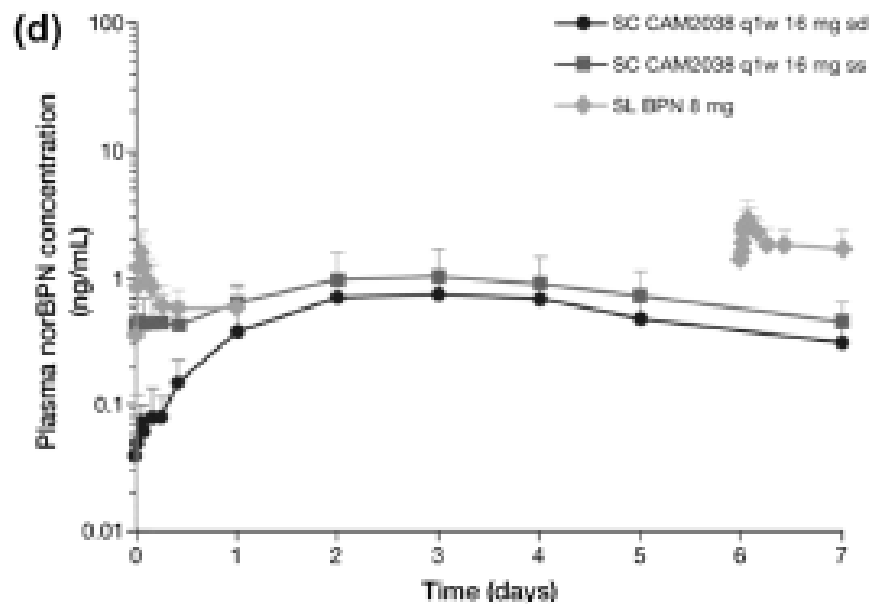
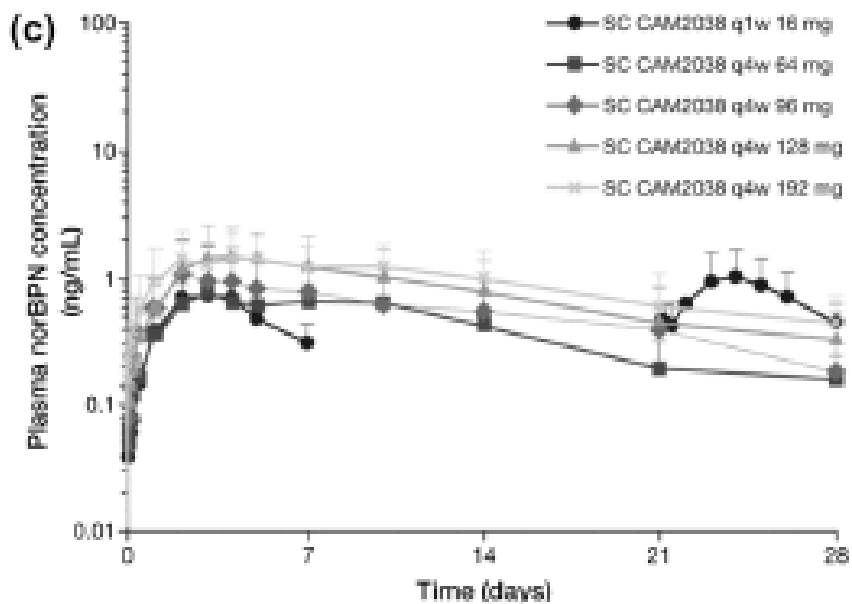
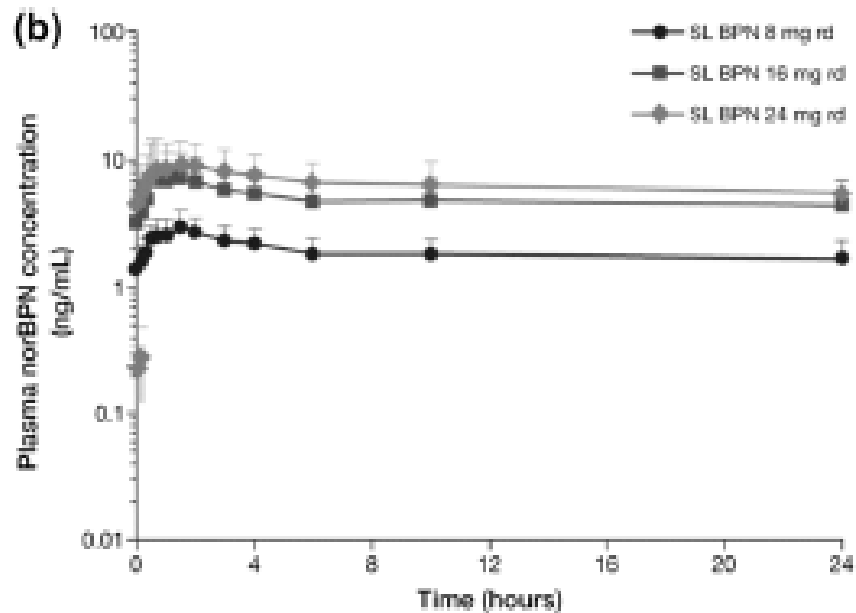
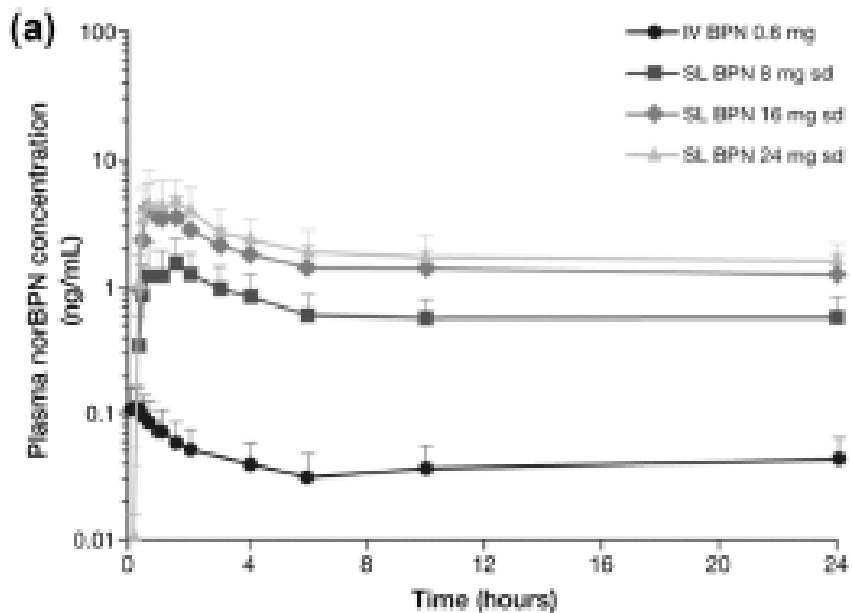


ORIGINAL RESEARCH

Pharmacokinetic Evaluation of Once-Weekly and Once-Monthly Buprenorphine Subcutaneous Injection Depots (CAM2038) Versus Intravenous and Sublingual Buprenorphine in Healthy Volunteers Under Naltrexone Blockade: An Open-Label Phase 1 Study

Muna Albayaty · Margareta Linden · Håkan Olsson · Markus Johnsson · Kerstin Strandgården · Fredrik Tiberg

Received: November 3, 2016 / Published online: January 9, 2017
© Springer Healthcare 2017





Contents lists available at ScienceDirect

Journal of Substance Abuse Treatment



Pharmacokinetics and pharmacodynamics of a buprenorphine subcutaneous depot formulation (CAM2038) for once-weekly dosing in patients with opioid use disorder

Christian Haasen^a, Margareta Linden^b, Fredrik Tiberg^{b,*}

^a Clinical Trial Centre North, Mediate GmbH, University Medical Centre Hamburg Eppendorf, Martinistraße 52, Haus 510, 20246 Hamburg, Germany

^b Camurus AB, Ideon Science Park, Gamma Building, Sölvegatan 41, 223 70 Lund, Sweden



In conclusion, in patients with opioid dependence, CAM2038 q1w provided dose-proportional extended release of buprenorphine with target therapeutic plasma levels maintained for at least 7 days. Opioid-withdrawal symptoms were generally well controlled for up to 10 days after injection in all dose groups. The observed duration of therapeutic plasma drug levels and pharmacodynamic effects confirmed the selection of matching doses of CAM2038 q1w in accordance with the conversion scheme to pre-study daily maintenance doses of sublingual buprenorphine for each treatment group. Therapeutic doses of CAM2038 q1w are thus predictable from patients' current maintenance doses of sublingual buprenorphine. Moreover, from the measured plasma concentrations, these doses would be expected to provide therapeutic effects when administered once a week. CAM2038 q1w had acceptable tolerability. Based on this profile, CAM2038 q1w is expected to be suited for treating patients with a regimen of more intensive and frequent behavioral treatment and clinical visits. With a focus on ease of use, dosing flexibility, and minimizing the risks of misuse, diversion, and poor patient adherence, CAM2038 depots are promising future medications to be considered in individualized treatment plans for patients struggling with opioid dependence.

Canabinoids are now part of medical care

- How to react in Prison?

WHO Datenblätter

- Deutsche Daten