

**EG on HIV, TB&AI
5th Meeting
Vilnius, Lithuania
October 3, 2017**

Reference	HIV, TB&AI Meeting 5/Info 1
Title	Practical information for participants
Submitted by	ITA

CONTACT PERSONS

HIV, TB&AI EG International Technical Advisors: Dmitry Titkov National Institute for Health and Welfare (THL) Phone/ mobile: +358 29 524 7051 E-mail: dmitry.titkov@thl.fi Paula Tanhuanpää National Institute for Health and Welfare (THL) Phone: +358 29 524 8183 email: paula.tanhuanpaa@thl.fi	Contact persons: Prof. Saulius Caplinskas, MD, PhD Director, Centre for Communicable Diseases and AIDS Nugaletoju St. 14D, LT-10105 Vilnius Lithuania Tel. +3705 2300125 Fax. +3705 2767968 Mob. +370 69821173 E-mail: saulius@ulac.lt
---	---

MEETING VENUE AND ACCOMMODATION

Meeting venue Centre for Communicable Diseases and AIDS Nugaletoju St. 14D, LT-10105 Vilnius Lithuania	Recommended accommodation: Check website http://www.badv2017vilnius.org/page10.html
--	---

CONFIRMATION OF PARTICIPATION

Kindly confirm your participation by means of the on-line registration form which is available at http://www.ndphs.org/?mtgs,hiv_tb&ai_5_vilnius by **September 22, 2017**

ACCOMMODATION

The Meeting will be held in connection with the 2nd Vilnius Communicable Diseases Summit (<http://www.badv2017vilnius.org/index.html>) and many of the EG members may want to attend the Summit too. Therefore, it is recommended to book accommodation in one of the Host's recommended hotels. The list of the accommodation options is available at: <http://www.badv2017vilnius.org/page10.html>.

MEALS

The Host will kindly provide coffee/tea breaks and lunch during the Meeting.

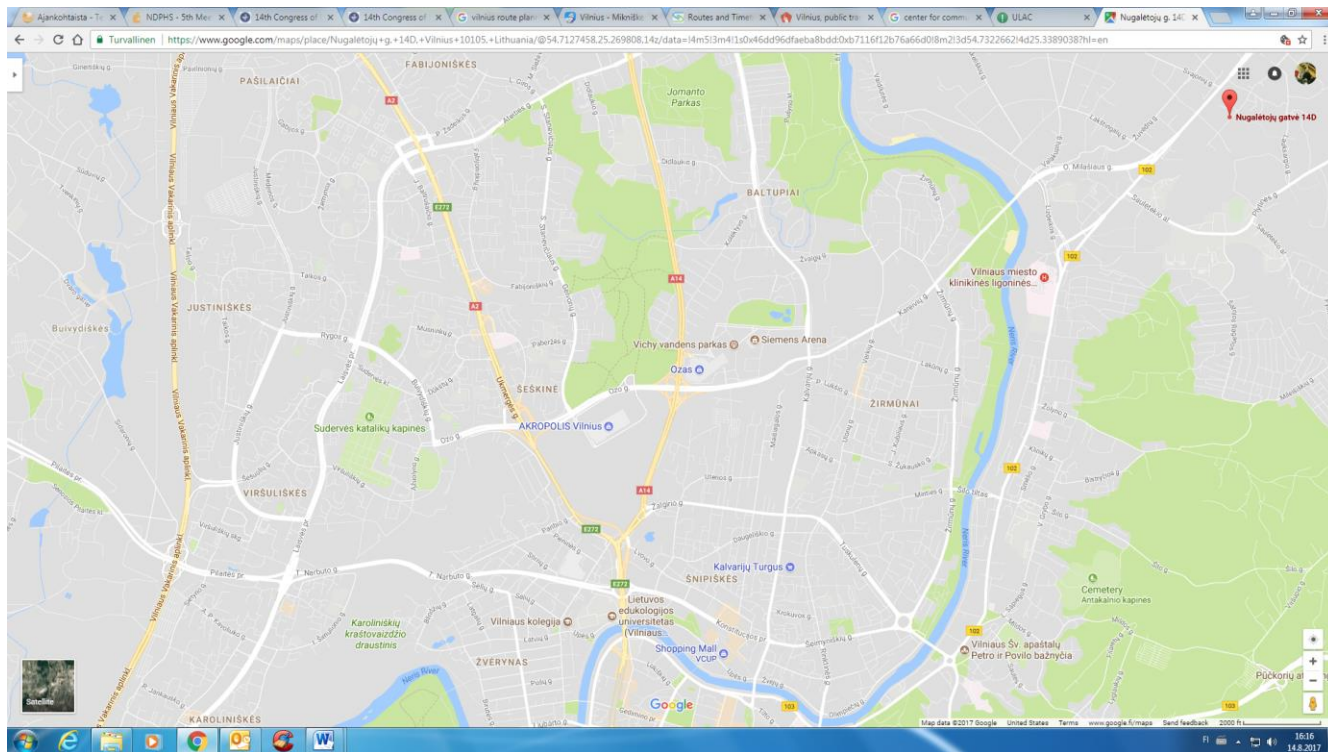
MEETING DOCUMENTS

Participants are expected to print all documents and bring them to the meeting.

TRAVEL INFORMATION

The participants are asked to take care of their transfers from the airport to the meeting venue/hotel, as well as back to the airport.

The Centre of Infectious Diseases and AIDS is not located centrally (see the map below, it is marked to the northeast off the downtown), and you need to check beforehand the routes from the airport or your hotel).



To construct the route from your starting place to the destination you can use the route planner <https://www.trafi.lt/?l=en>. You need to enter the stop you start from (Oro uostros is the airport) and stop of your destination (closest are Kiškių St. and Lakštingalų st.). The route planner will show you the travel options and price.

The taxi from the airport to the venue of the Meeting will cost around 10 euros.