

**WHO-EURO CPH**

**24-26.3.2010**

**SIHLWA-9**

**SIHLWA**

**SIHLWA  
new  
operational  
mode**



**Thematic area 4: Lifestyle-related non-communicable diseases and good social and work environments**

**SIHLWA EXPERT GROUP new Terms of Reference - DRAFT  
080310**

**GOAL 7:**

**Terms of Reference for NDPHS Task Group on Alcohol and Drug Prevention among Youth in NDPHS Area: Fast-track Flagship Project (ADPY-FLAGSHIP) DRAFT 110310**

**GOAL 8:**

**Terms of Reference for NDPHS Task Group on Access to and Advertising of Alcoholic Beverages in NDPHS Area (ALC-POL) DRAFT 110310**

**GOAL 9:**

**Terms of Reference for NDPHS Task Group on Tobacco Control in NDPHS Area (TOB-CONTR) DRAFT 220310**

**GOAL 10:**

**Terms of Reference for NDPHS Task Group on Occupational Safety and Health (OSH) DRAFT-rev1 180310**

**GOAL 11:**

**Terms of Reference for NDPHS Task Group on Indigenous Mental Health, Addictions and Parenting ((IMHAP) - DRAFT 080310**

**CRUCIAL:** Each TASK GROUP just as EXPERT GROUP must have explicitly nominated LEAD PARTNER and CO-LEAD PARTNER.

Nomination of EXPERT GROUP and TASK GROUP member/representative need to become much more regulated and supported. They also need to have an alternate-member/representative system

TOR is presented to CSR by LEAD PARTNER (next opportunity 19-20/3 in Moscow)

## **General Representation and Participation**

**General representation within the Task Group shall consist of high-level experts in the field, including from the administrative sector, from the research community as well as from relevant NGOs. These high-level experts shall be appointed to the Task Group by the interested Partner Countries and Partner Organisations.**

**In appointing representatives to the Group, the Partner Countries and Organisations will be guided by the following requirements for nomination of experts:**

- High level expertise in the field covered by the Task Group;**
- Experience in networking and reaching out to individuals and groups of scientists familiar with the regional aspects;**
- Experience in project facilitation and assessment**
- Ability to actively take part in and contribute to the Task Group work (both during meetings and in-between them).**

**Before nominating its representative(s) to the Task Group, the nominating Partner Country or Partner Organisation will ensure that the nominated expert(s) will have covered his/her/their travel and other expenses related to the participation in the Task Group meetings. If a Partner Country or Partner Organisation decides to change its appointed representative(s), it should inform the Task Group Chair and the NDPHS Secretariat immediately.**

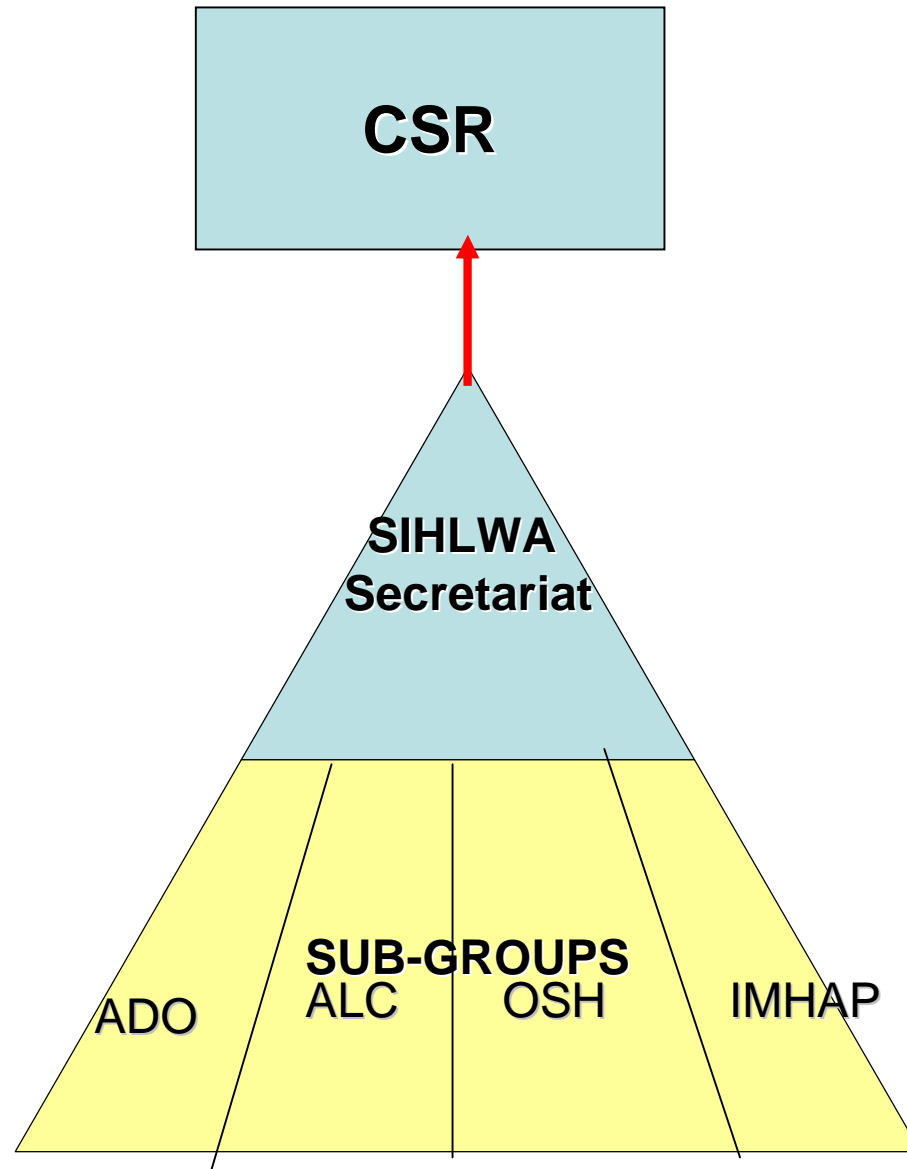
**In addition to the appointed Partner Country and Partner Organisation representatives, the Task Group is entitled to invite external actors, i.e. other “eligible participants” and “interested parties” as defined in the Oslo Declaration, to be involved in the work of the Task Group.**

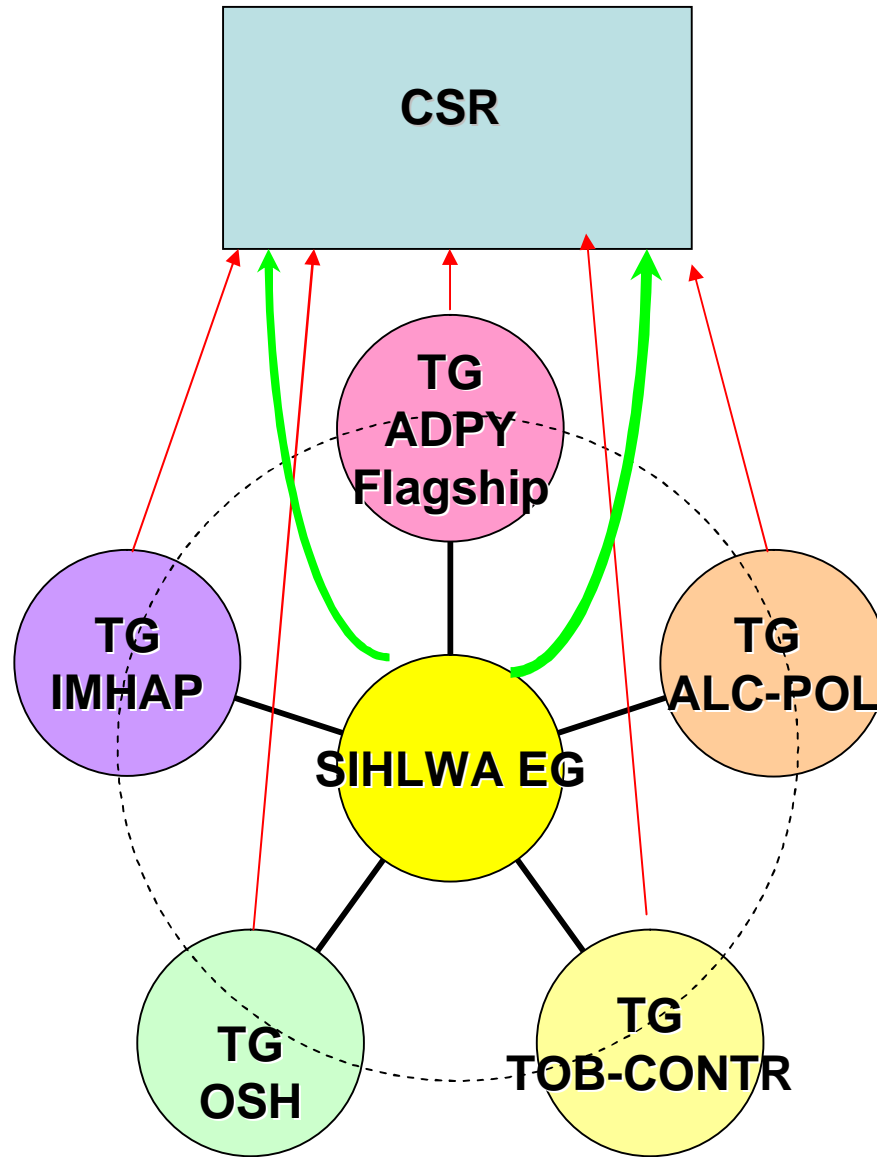
## Decision Making and Reporting

The Task Group is answerable to the CSR and PAC. To this end, it will provide feedback and report to the CSR, as well as PAC, as necessary.

The Task Groups relationship to SIHLWA EG is not a subordinate one, but aims to be a cohesive link with other Task Groups working on closely related topics. SIHLWA EG provides logistic advice and helps in disseminating the results and seeks for additional support for project funding opportunities

**SIHLWA**  
**2005 -2009**





**SIHLWA**  
**2010** →