



Alcohol consumption in Europe

ALC subgroup meeting of SIHLWA 24 March 2010

Alcohol and Drugs

Dr Lars Moller, PhD
World Health Organization
Regional Office for Europe

Alcohol consumption (2004)

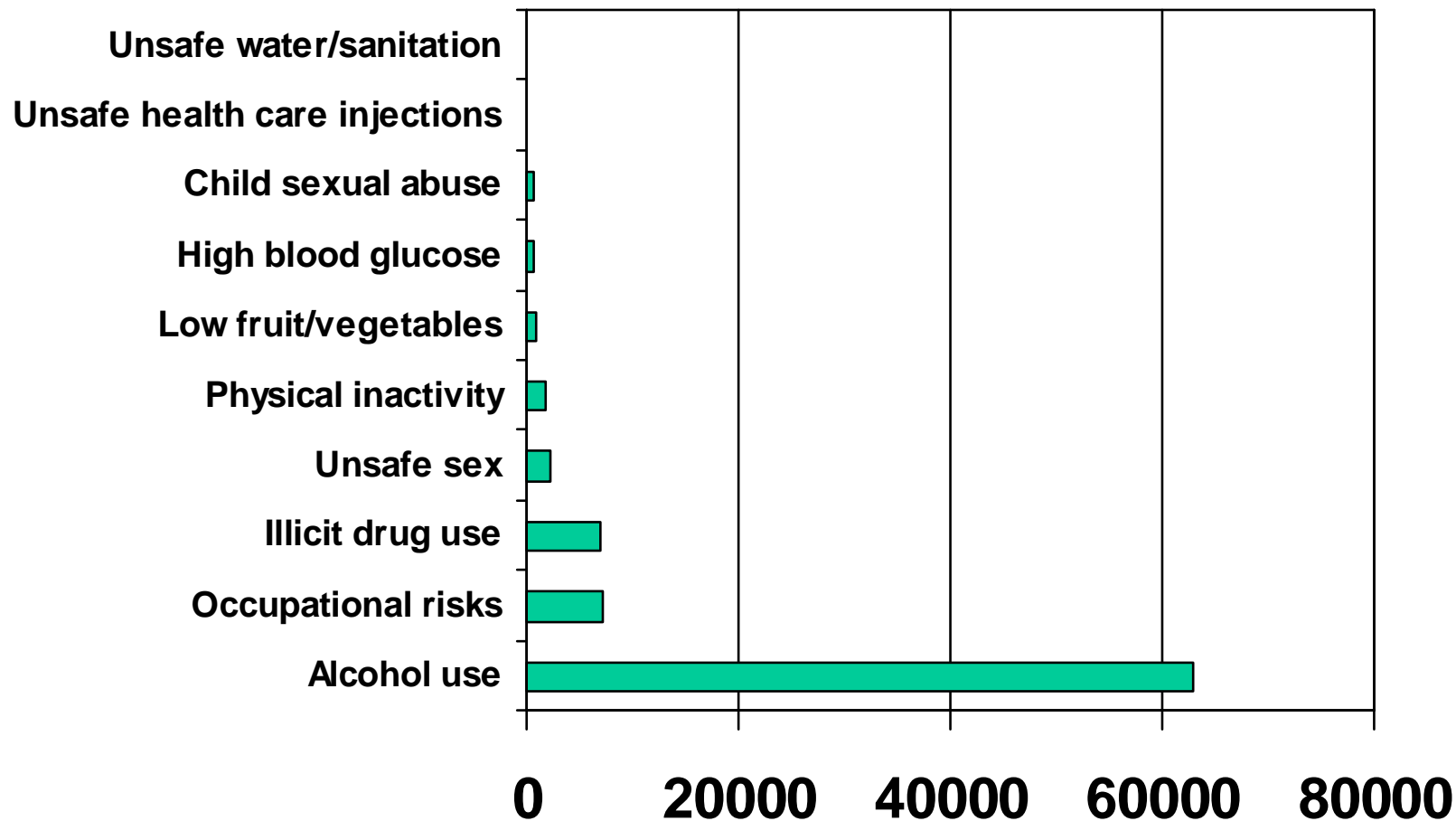
- Two main dimensions affect health:
 - Average of volume
 - Patterns of drinking especially binge drinking
- Estimated 618.000 deaths attributable to alcohol a year in Europe (2004).
- Estimated 17 mio years lost due to disability and death (DALY) a year in Europe (2004).
- In Europe, 6.5% of deaths and 11.4% of DALY's were attributed to alcohol use.
- Globally 3.8% of deaths and 4.6% of DALY's were attributed to alcohol use.

Disability adjusted life years lost due to risk factors in EURO in 2004

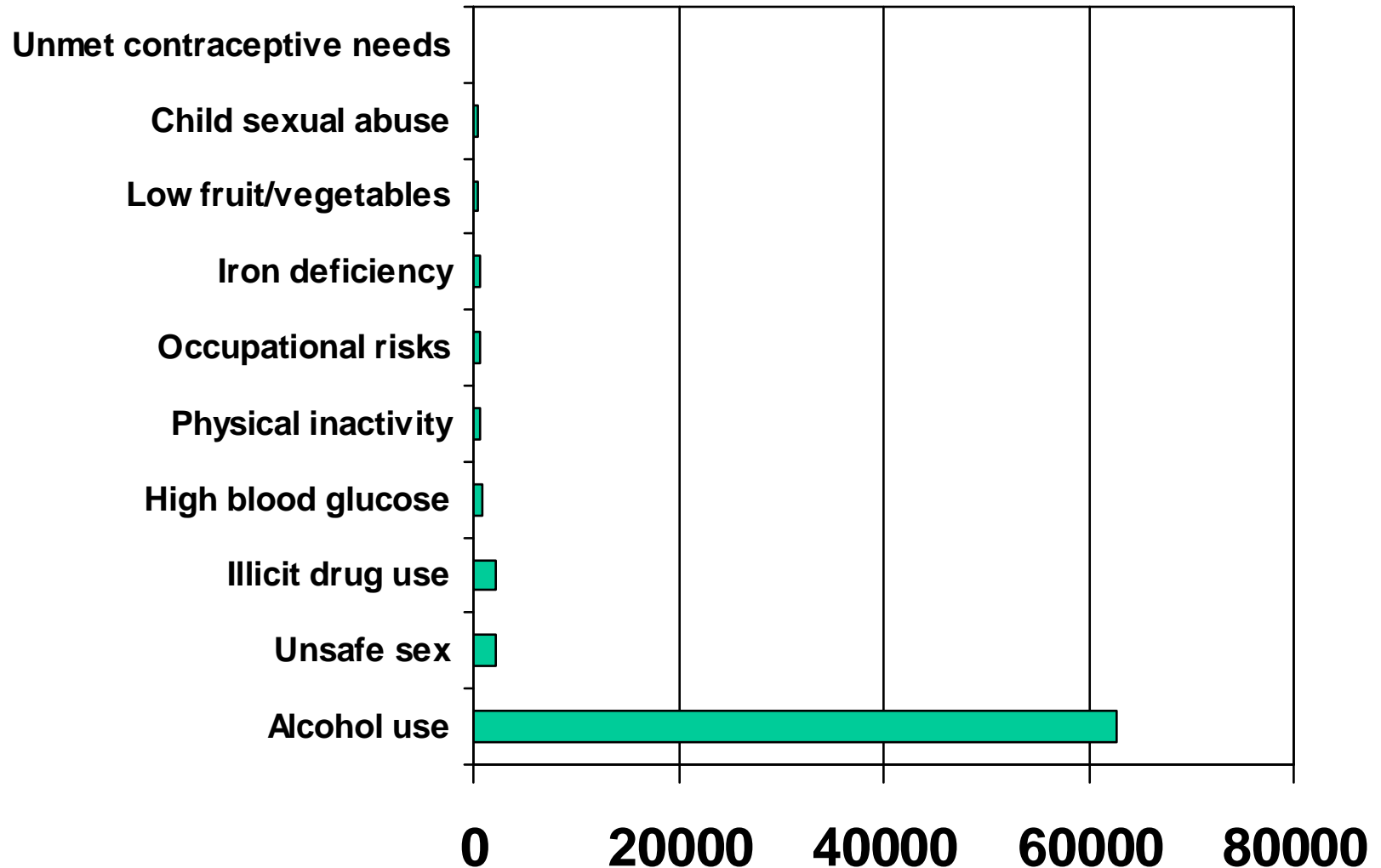
High Income European Countries	Low Income European Countries	Total European Countries
1 Tobacco use	Alcohol use	Tobacco
2 Blood pressure	Blood pressure	Alcohol use
3 Alcohol use	Tobacco	High blood pressure
4 Overweight/obesity	Overweight/obesity	Overweight/obesity
5 High blood glucose	High cholesterol	High cholesterol
6 Physical inactivity	Physical inactivity	Physical inactivity
7 High cholesterol	High blood glucose	High blood glucose
8 Illicit drug use	Illicit drug use	Low fruit/vegetables
9 Low fruit/vegetable	Suboptimal breastfeed.	Illicit drug use
10 Unsafe sex	Unsafe sex	Unsafe sex

Source: Global Health Risks, WHO 2009

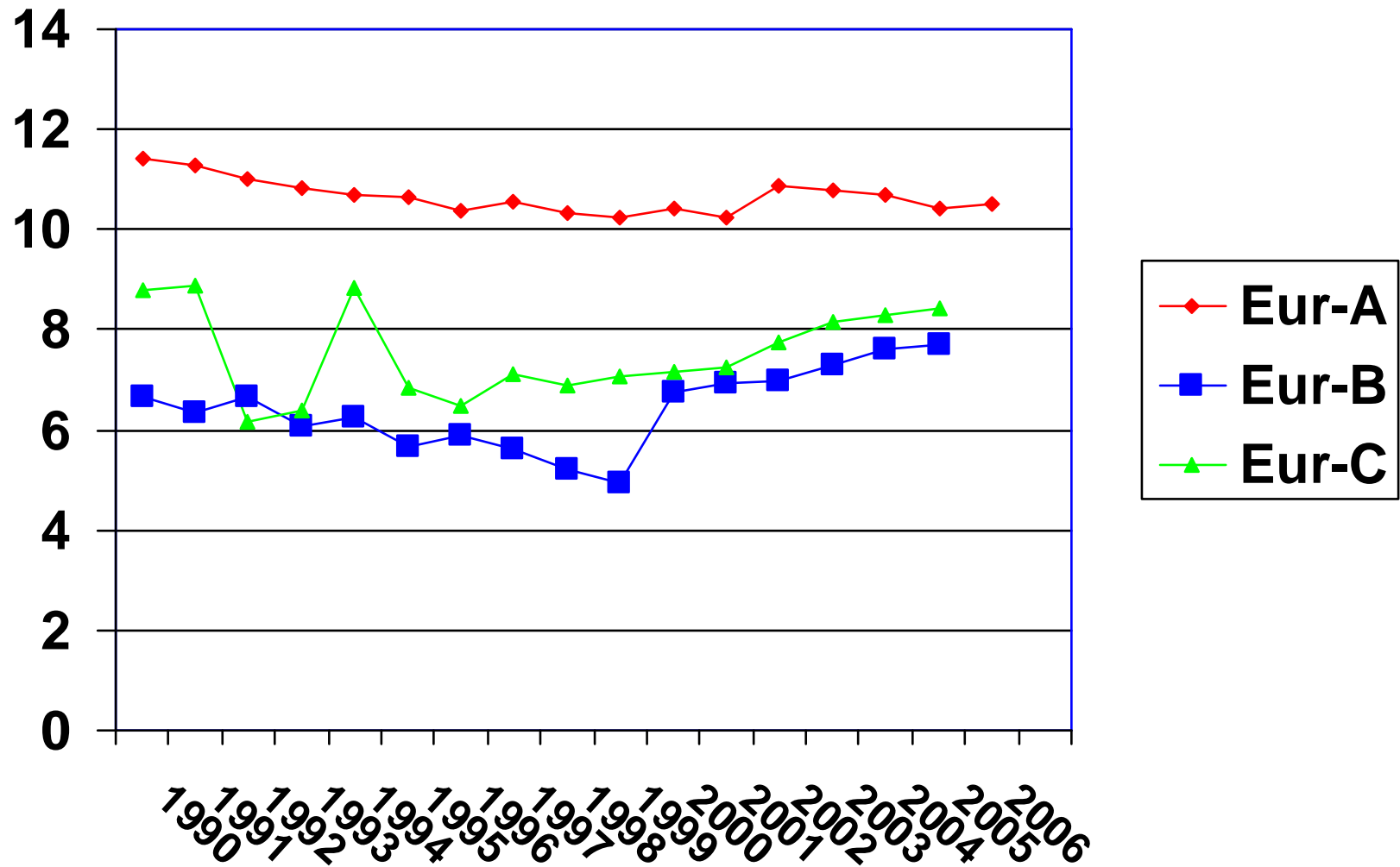
Male deaths age 15-29 in EURO due to selected risk factors in 2004



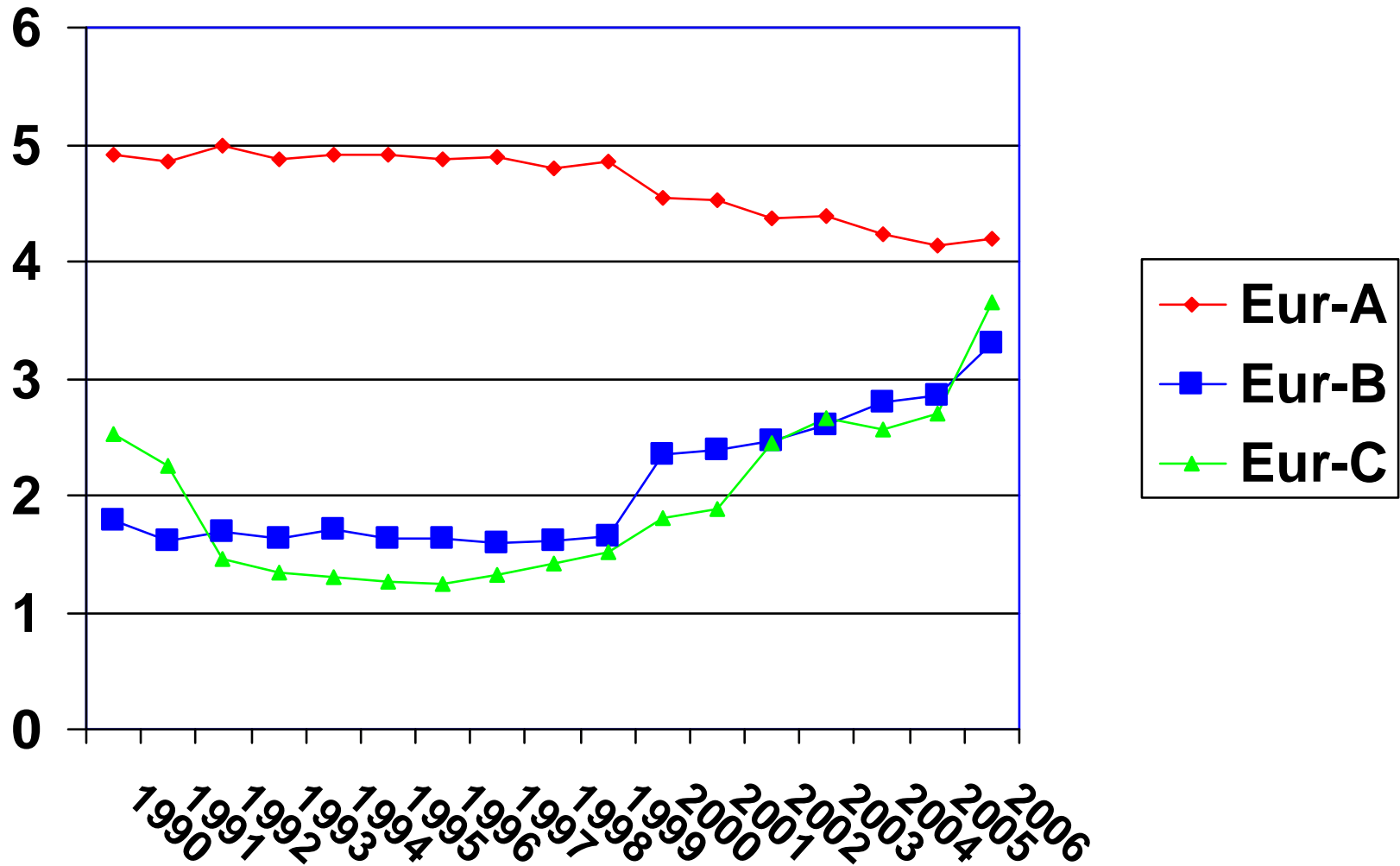
Female deaths age 15-29 in EURO due to selected risk factors in 2004



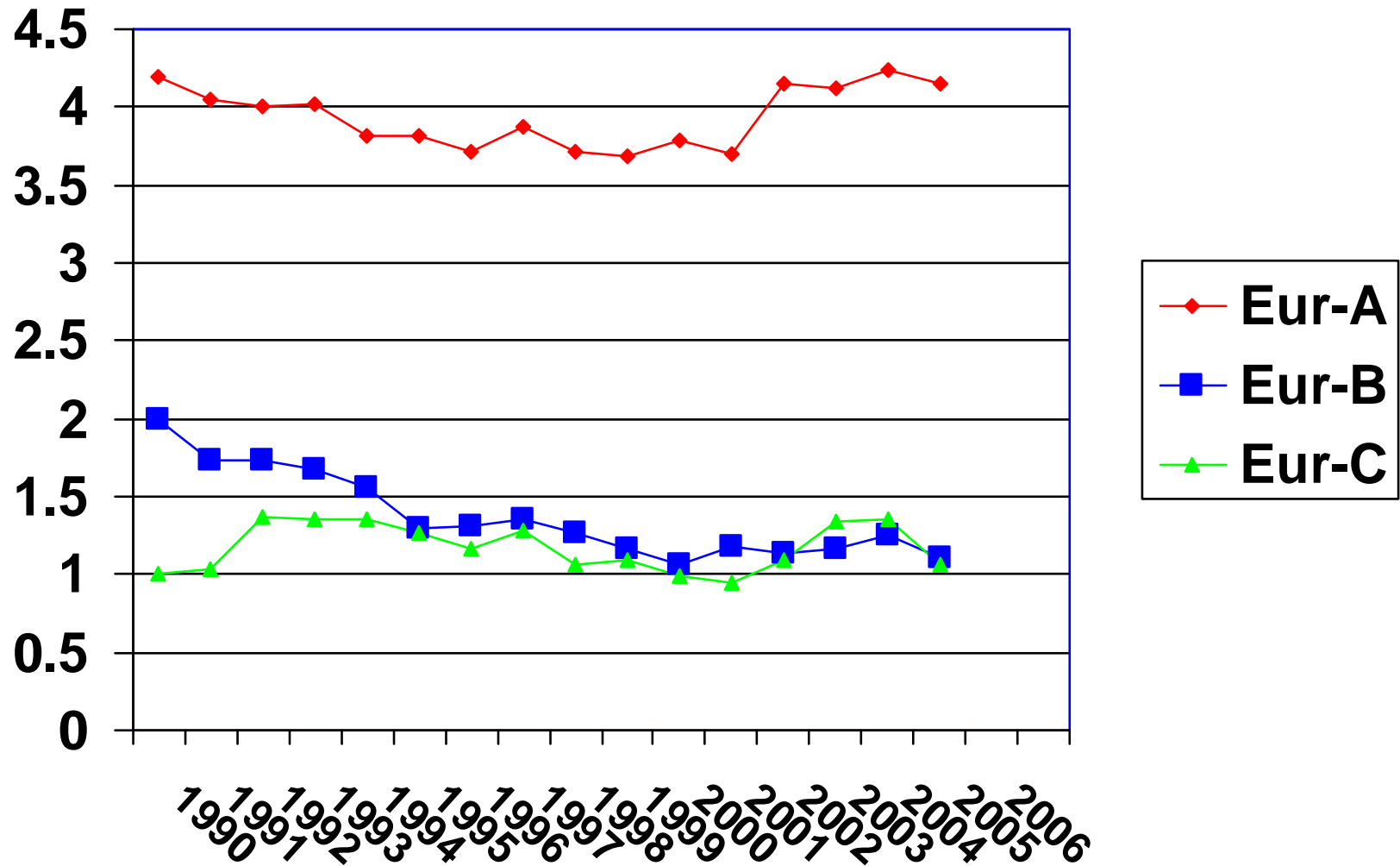
Total alcohol consumption in Europe



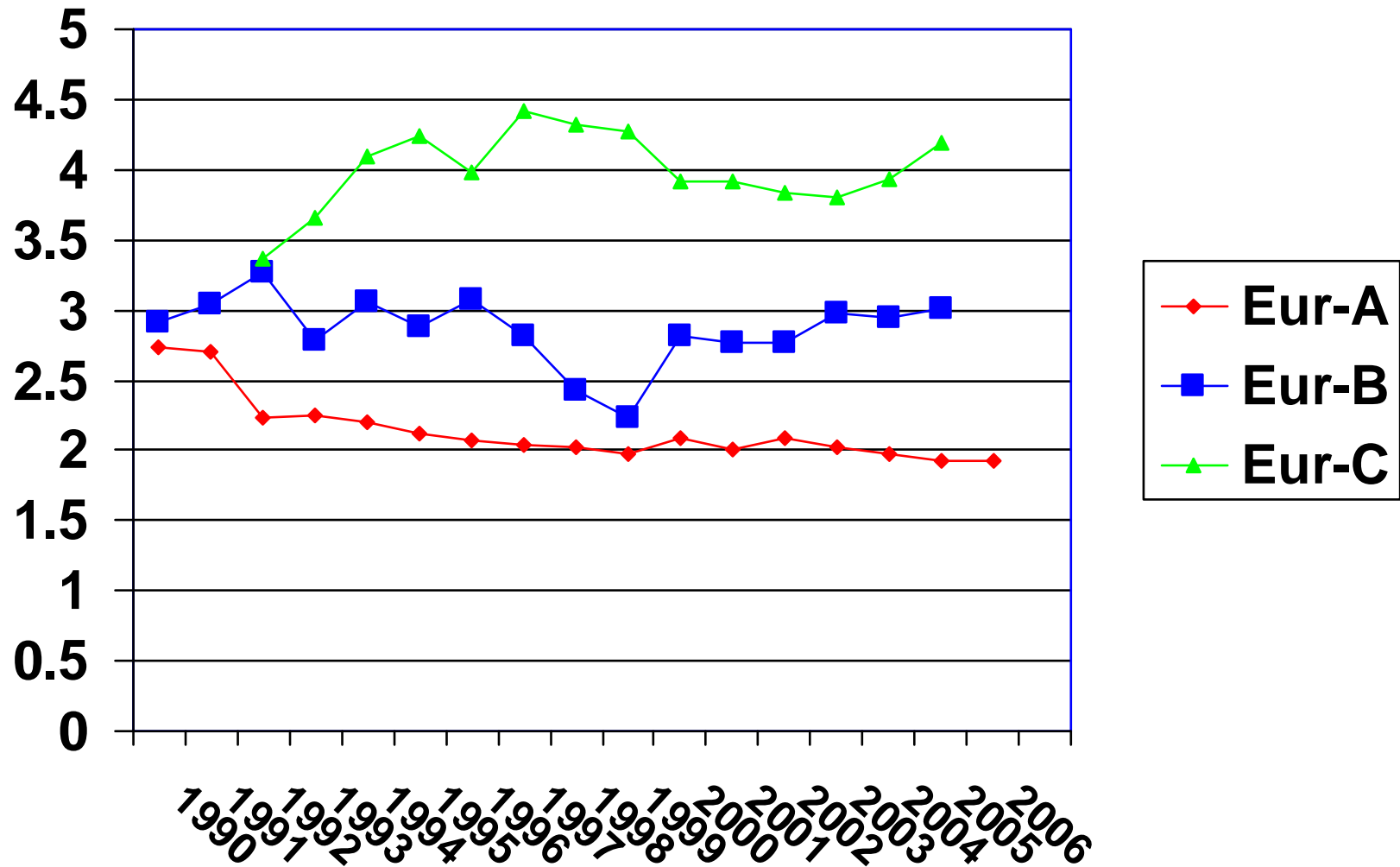
Beer consumption in Europe



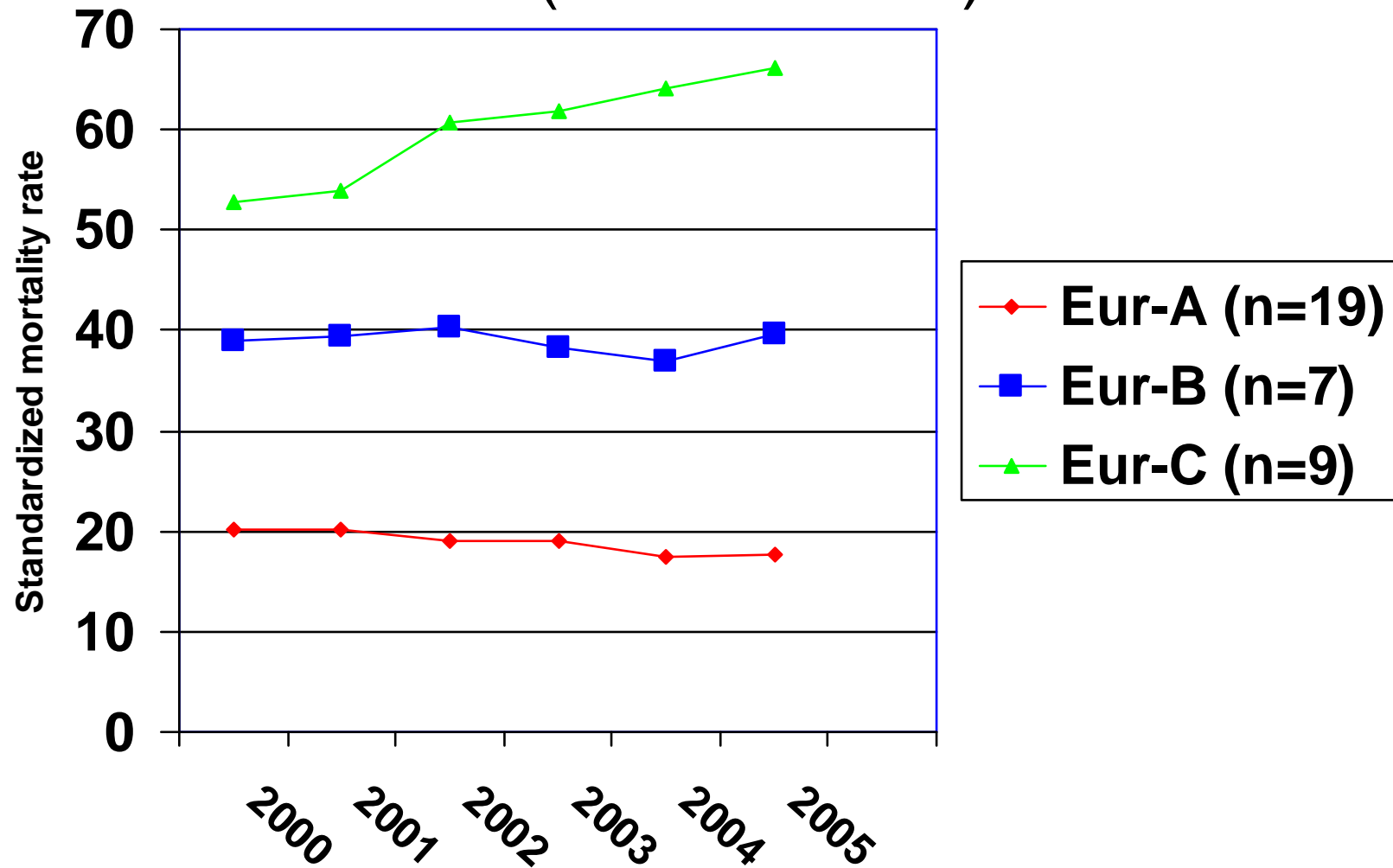
Wine consumption in Europe



Spirit consumption in Europe



Mortality due to liver cirrhosis in Europe, men (35 countries)



Mortality due to liver cirrhosis in Europe, women (35 countries)

